

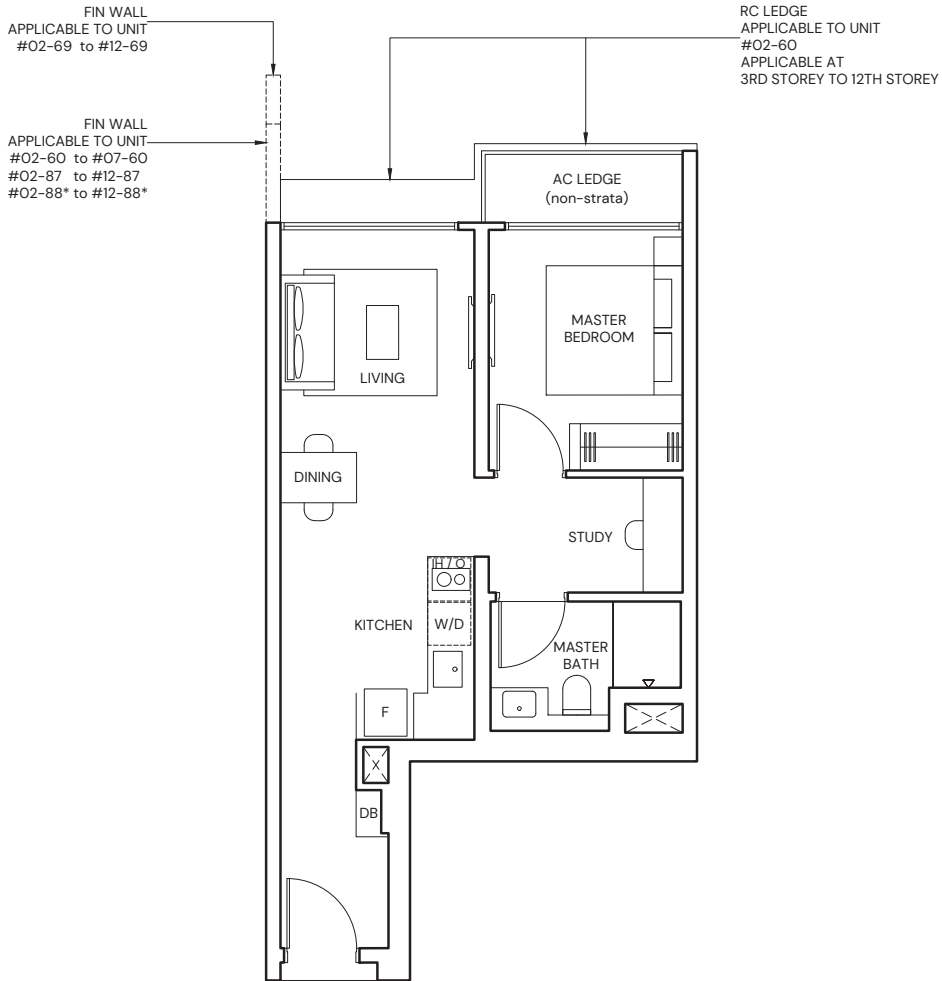
1-BEDROOM + STUDY

TYPE AS1

47sqm / 506 sqft

BLK 11 #02-60 to #07-60
 BLK 13 #02-69 to #12-69
 BLK 17 #02-87 to #12-87

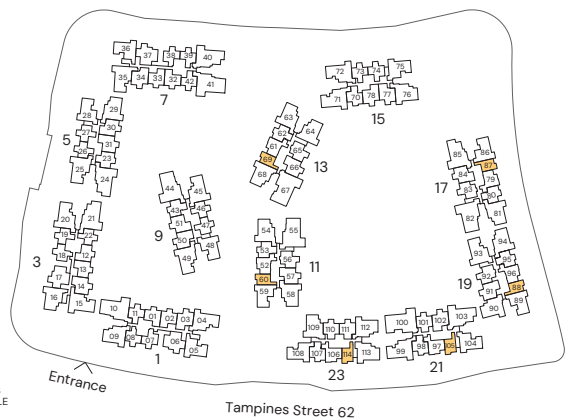
BLK 19 #02-88* to #12-88*
 BLK 21 #02-105 to #12-105
 BLK 23 #02-114 to #12-114



* Mirrored Unit



Area includes Private Enclosed Space (PES) or Balcony, where applicable. All AC ledges and RC ledges (non-load bearing) are excluded from strata area. The plans are subjected to change as may be required by relevant authorities. All areas and measurements stated herein as approximate and subject to final survey.

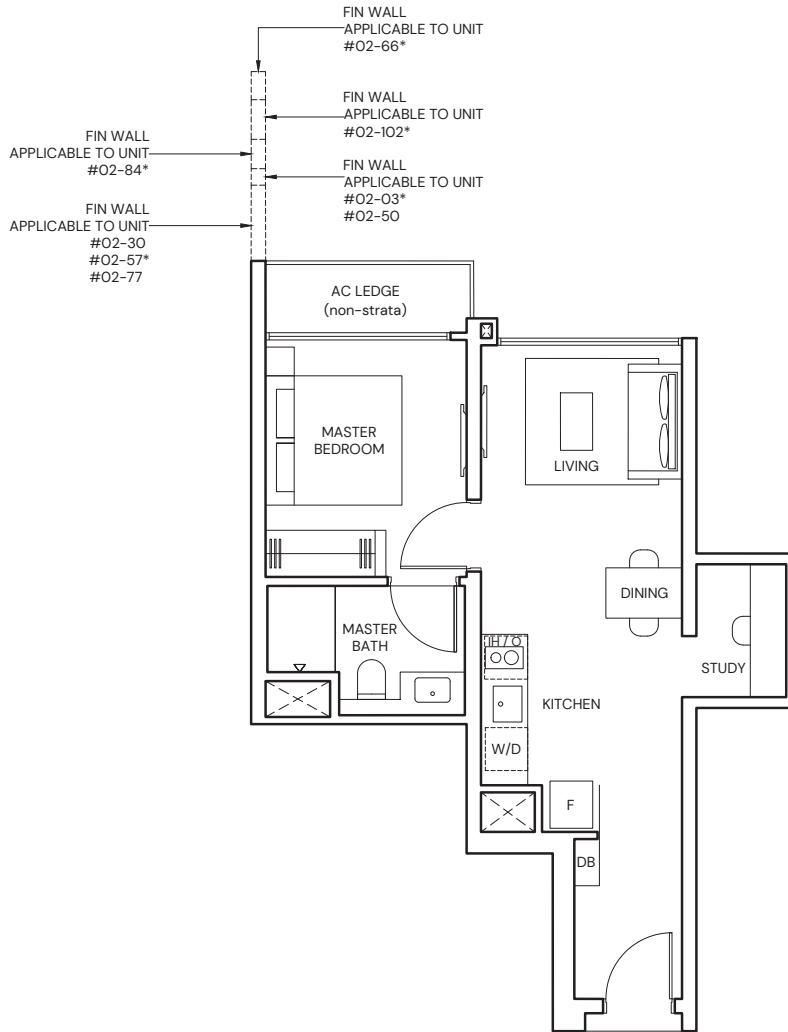


1-BEDROOM + STUDY

TYPE AS2

43 sqm / 463 sqft

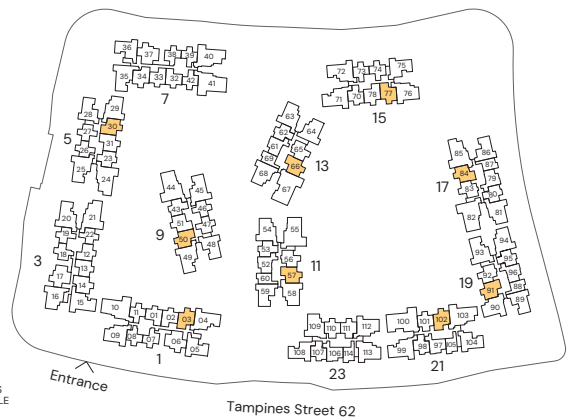
BLK 1 #02-03*	BLK 11 #02-57*	BLK 17 #02-84*
BLK 5 #02-30	BLK 13 #02-66*	BLK 19 #02-91
BLK 9 #02-50	BLK 15 #02-77	BLK 21 #02-102*



* Mirrored Unit



Area includes Private Enclosed Space (PES) or Balcony, where applicable. All AC ledges and RC ledges (non-load bearing) are excluded from strata area. The plans are subjected to change as may be required by relevant authorities. All areas and measurements stated herein as approximate and subject to final survey.



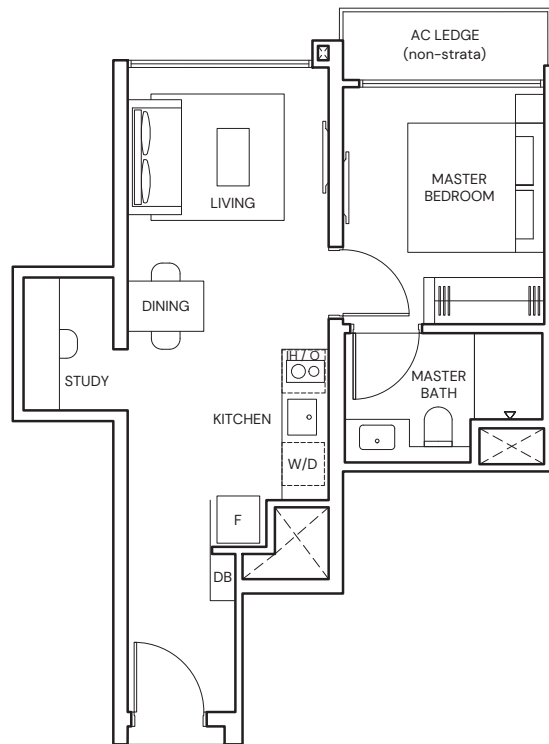
1-BEDROOM + STUDY

TYPE AS3

43 sqm / 463 sqft

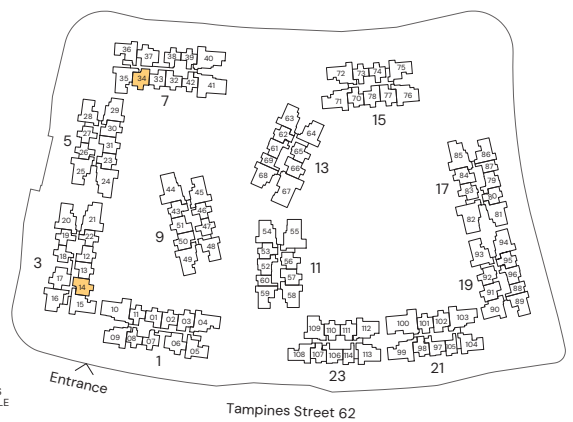
BLK 3 #02-14

BLK 7 #02-34



Area includes Private Enclosed Space (PES) or Balcony, where applicable. All AC ledges and RC ledges (non-load bearing) are excluded from strata area. The plans are subjected to change as may be required by relevant authorities. All areas and measurements stated herein as approximate and subject to final survey.

KEY PLAN IS NOT TO SCALE

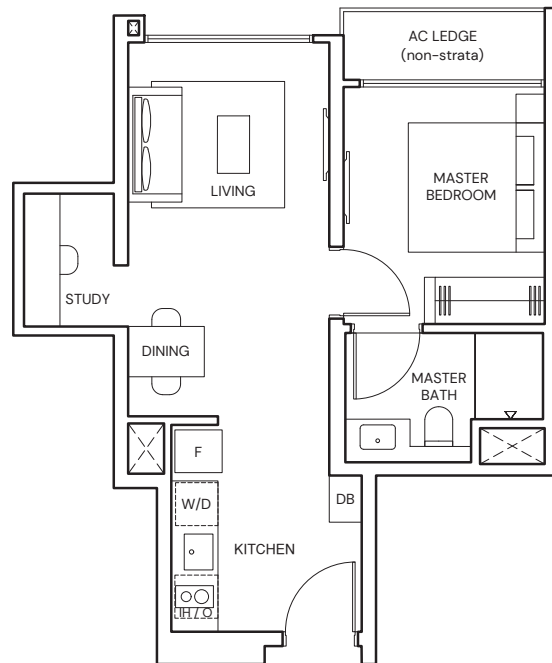


1-BEDROOM + STUDY

TYPE AS4

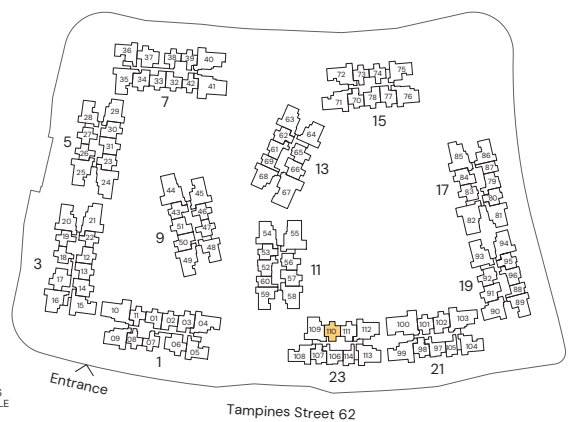
43 sqm / 463sqft

BLK 23 #02-110



Area includes Private Enclosed Space (PES) or Balcony, where applicable. All AC ledges and RC ledges (non-load bearing) are excluded from strata area. The plans are subjected to change as may be required by relevant authorities. All areas and measurements stated herein as approximate and subject to final survey.

KEY PLAN IS NOT TO SCALE



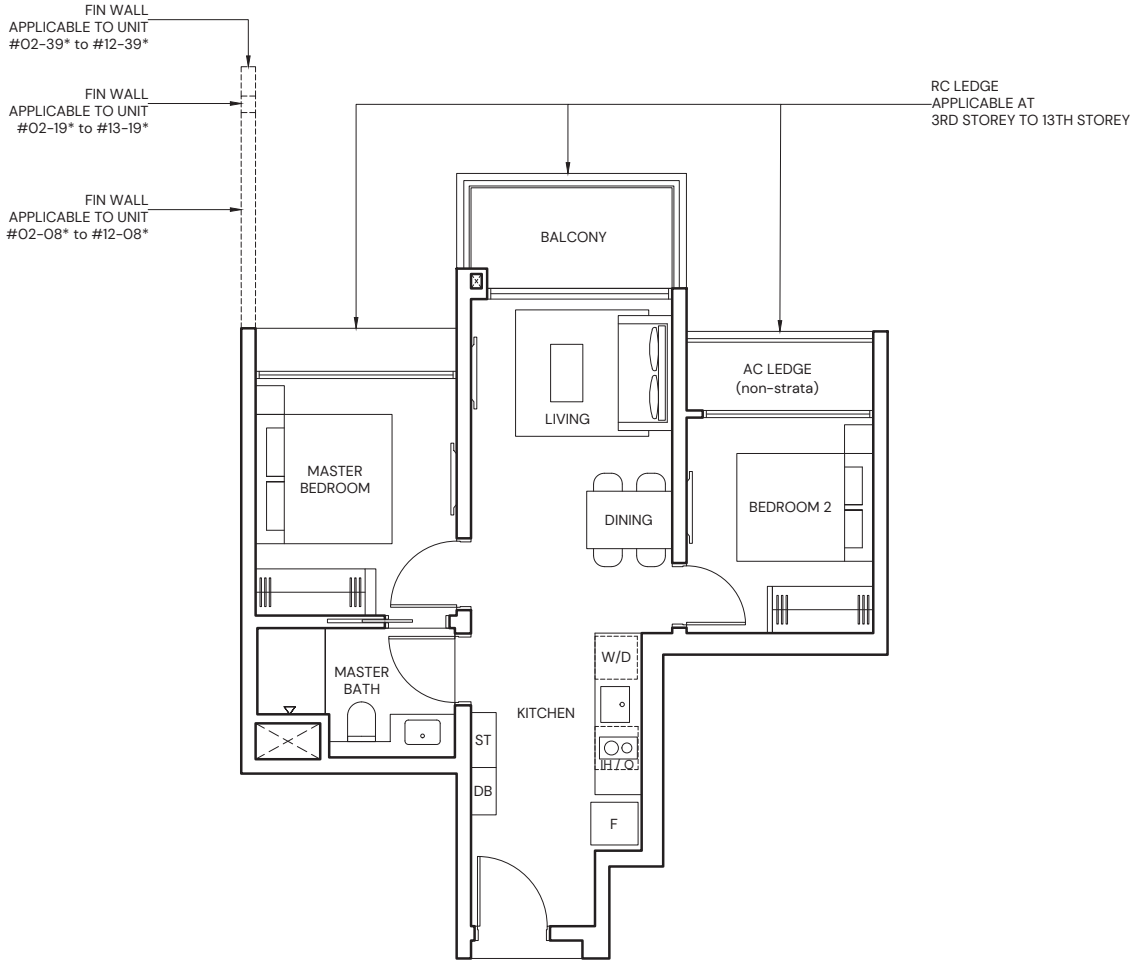
2-BEDROOM

TYPE B1

55 sqm / 592 sqft

BLK 1 #02-07 to #12-07
 BLK 1 #02-08* to #12-08*
 BLK 3 #02-18 to #13-18

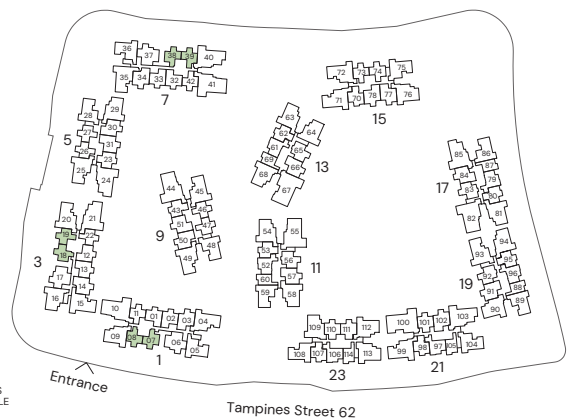
BLK 3 #02-19* to #13-19*
 BLK 7 #02-38 to #12-38
 BLK 7 #02-39* to #12-39*



*** Mirrored Unit**



Area includes Private Enclosed Space (PES) or Balcony, where applicable. All AC ledges and RC ledges (non-load bearing) are excluded from strata area. The plans are subjected to change as may be required by relevant authorities. All areas and measurements stated herein as approximate and subject to final survey.



KEY PLAN IS NOT TO SCALE

Tampines Street 62

2-BEDROOM

TYPE B2

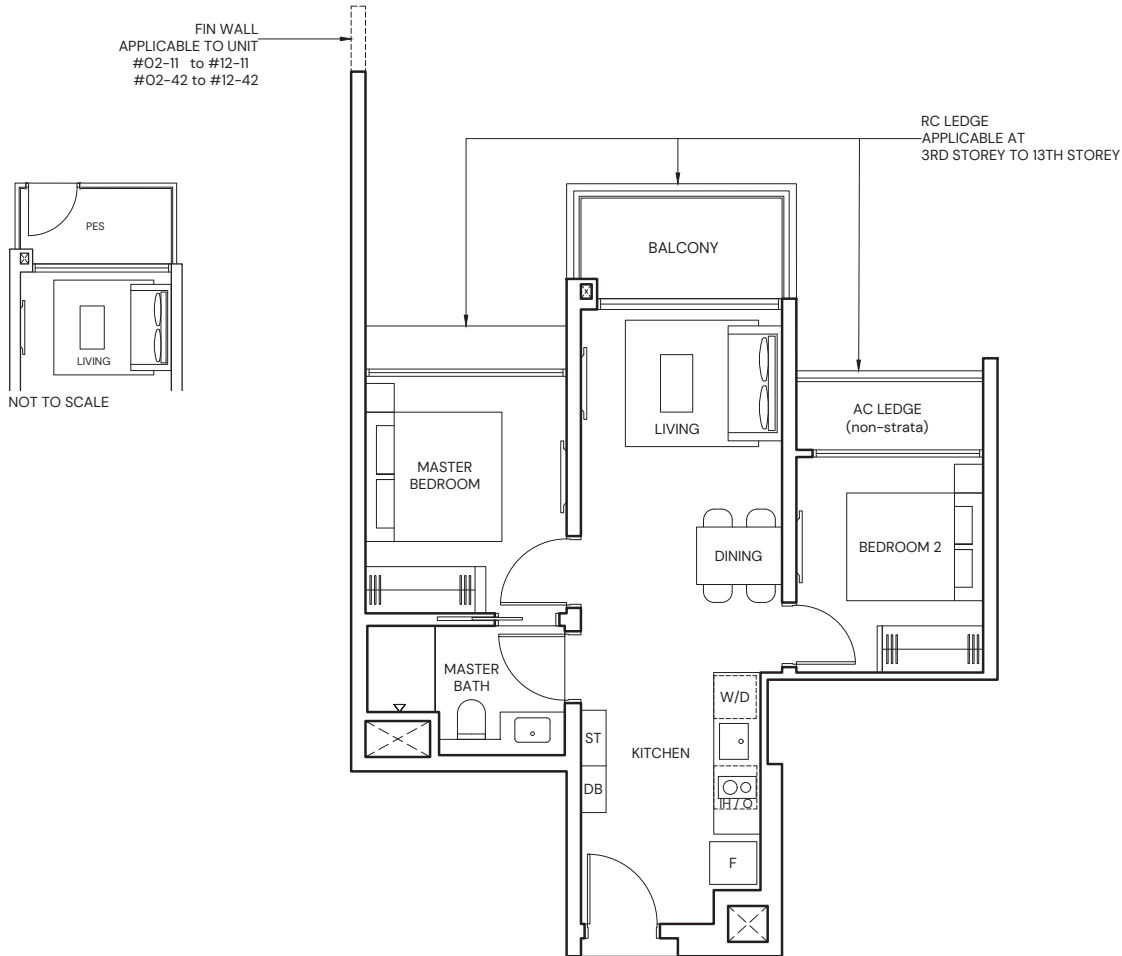
55 sqm / 592sqft

BLK 1 #03-11 to #12-11
 BLK 3 #03-22 to #13-22
 BLK 7 #03-42 to #12-42

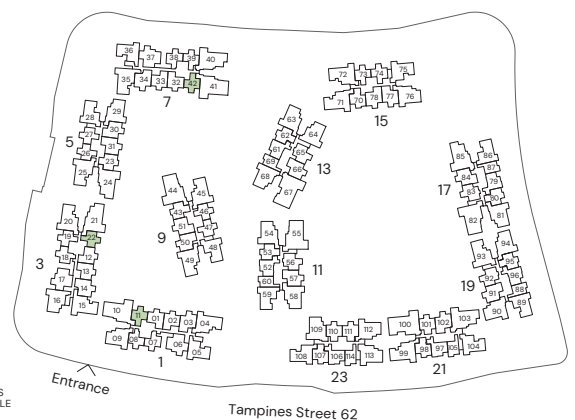
TYPE B2(p)

55 sqm / 592sqft

BLK 1 #02-11
 BLK 3 #02-22
 BLK 7 #02-42



Area includes Private Enclosed Space (PES) or Balcony, where applicable. All AC ledges and RC ledges (non-load bearing) are excluded from strata area. The plans are subjected to change as may be required by relevant authorities. All areas and measurements stated herein as approximate and subject to final survey.



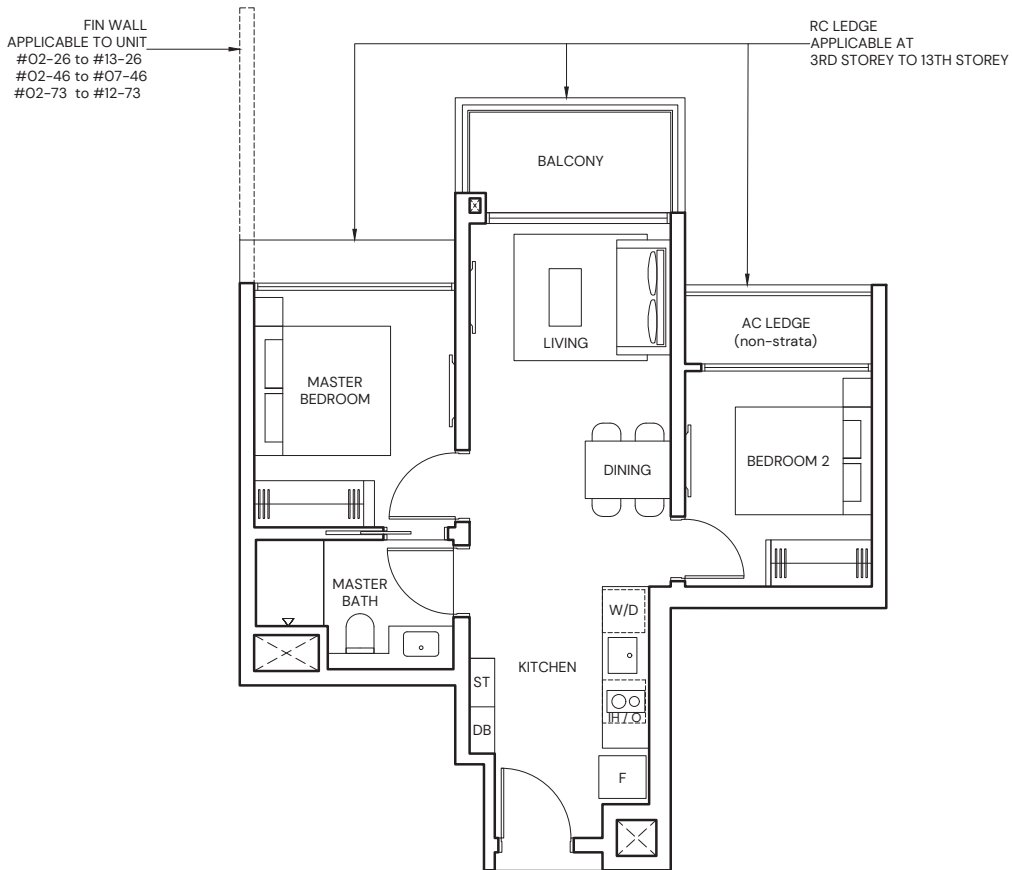
2-BEDROOM

TYPE B3

55 sqm / 592 sqft

BLK 5 #02-26 to #13-26
 BLK 5 #02-27* to #13-27*
 BLK 9 #02-46 to #07-46

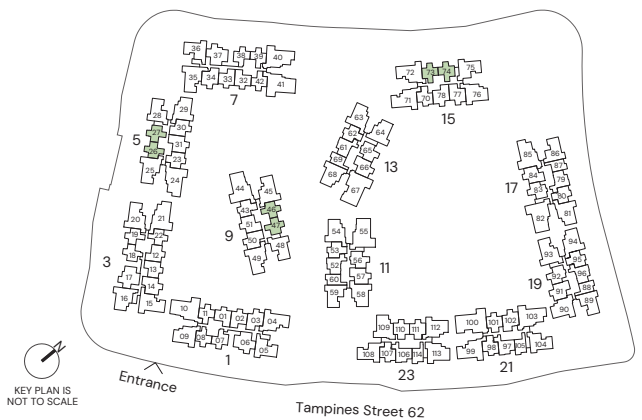
BLK 9 #02-47* to #07-47*
 BLK 15 #02-73 to #12-73
 BLK 15 #02-74* to #12-74*



* Mirrored Unit



Area includes Private Enclosed Space (PES) or Balcony, where applicable. All AC ledges and RC ledges (non-load bearing) are excluded from strata area. The plans are subjected to change as may be required by relevant authorities. All areas and measurements stated herein as approximate and subject to final survey.



2-BEDROOM PREMIUM

TYPE BP1

63 sqm / 678 sqft

BLK 5 #03-23 to #13-23
 BLK 9 #03-43 to #08-43
 BLK 11 #02-53 to #07-53

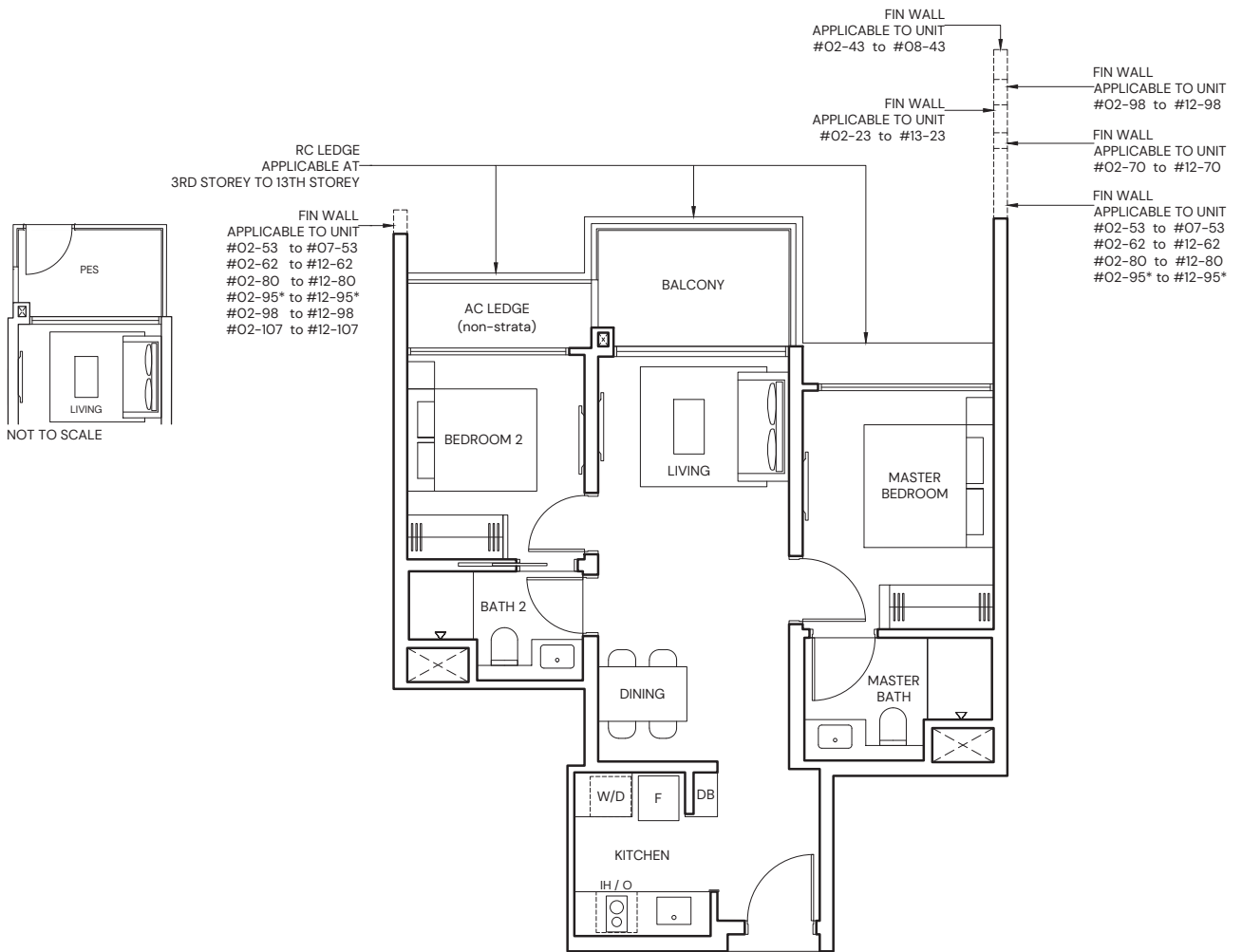
BLK 13 #02-62 to #12-62
 BLK 15 #03-70 to #12-70
 BLK 17 #02-80 to #12-80

BLK 19 #02-95* to #12-95*
 BLK 21 #02-98 to #12-98
 BLK 23 #02-107 to #12-107

TYPE BP1(p)

63 sqm / 678 sqft

BLK 5 #02-23
 BLK 9 #02-43
 BLK 15 #02-70

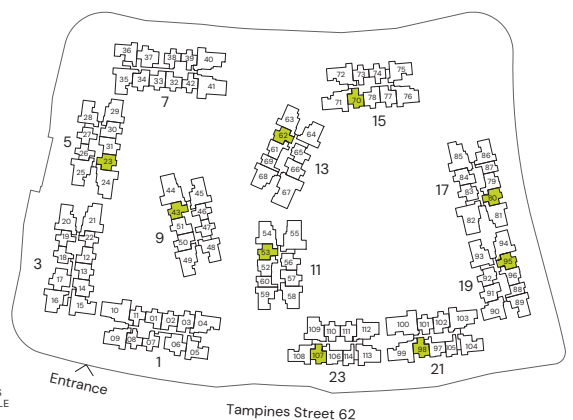


* Mirrored Unit



Area includes Private Enclosed Space (PES) or Balcony, where applicable. All AC ledges and RC ledges (non-load bearing) are excluded from strata area. The plans are subjected to change as may be required by relevant authorities. All areas and measurements stated herein as approximate and subject to final survey.

KEY PLAN IS NOT TO SCALE



2-BEDROOM PREMIUM

TYPE BP2

63 sqm / 678 sqft

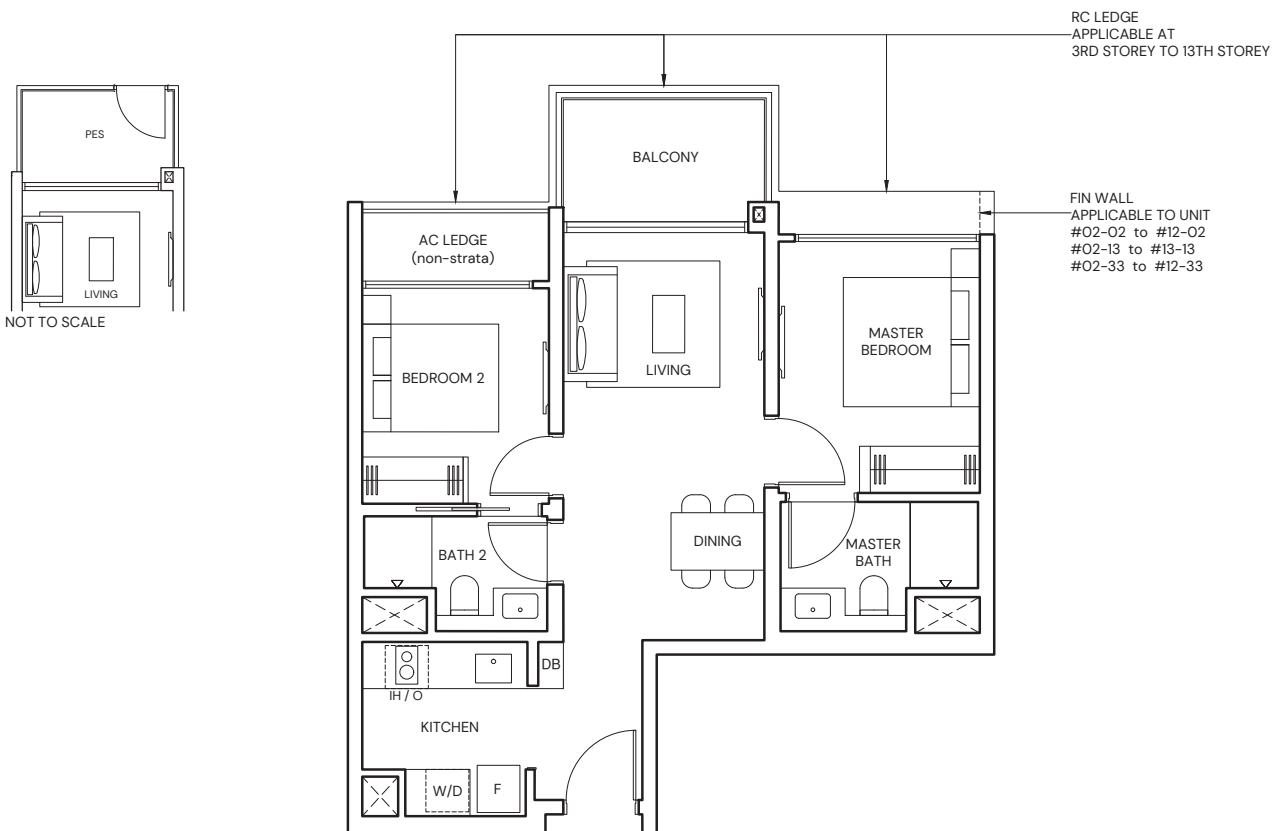
BLK 1 #03-01* to #12-01*
BLK 1 #03-02 to #12-02
BLK 3 #03-12* to #13-12*

BLK 3 #03-13 to #13-13
BLK 7 #03-32* to #12-32*
BLK 7 #03-33 to #12-33

TYPE BP2(p)

63 sqm / 678 sqft

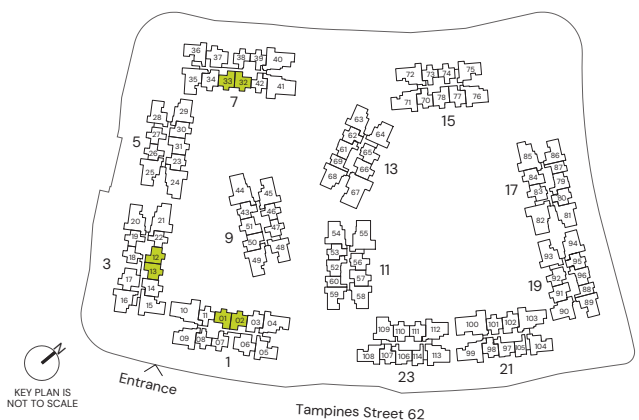
BLK 1 #02-01* BLK 3 #02-13
BLK 1 #02-02 BLK 7 #02-32*
BLK 3 #02-12* BLK 7 #02-33



* Mirrored Unit



Area includes Private Enclosed Space (PES) or Balcony, where applicable. All AC ledges and RC ledges (non-load bearing) are excluded from strata area. The plans are subjected to change as may be required by relevant authorities. All areas and measurements stated herein as approximate and subject to final survey.



KEY PLAN IS NOT TO SCALE

2-BEDROOM PREMIUM

TYPE BP3

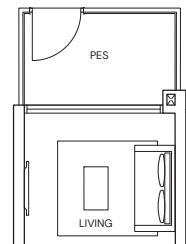
63 sqm / 678 sqft

BLK 21 #03-101* to #12-101*
 BLK 23 #03-110* to #12-110*
 BLK 23 #03-111 to #12-111

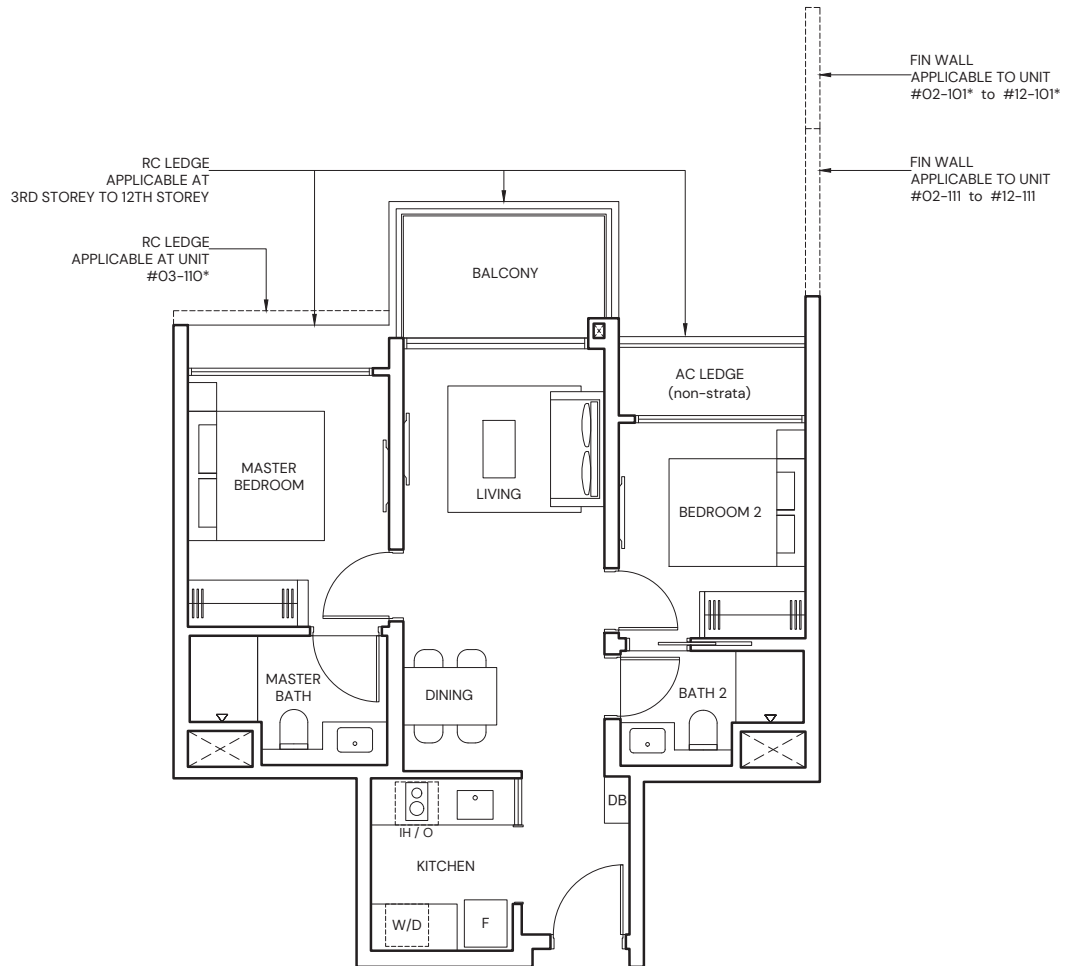
TYPE BP3(p)

63 sqm / 678 sqft

BLK 21 #02-101*
 BLK 23 #02-111



NOT TO SCALE

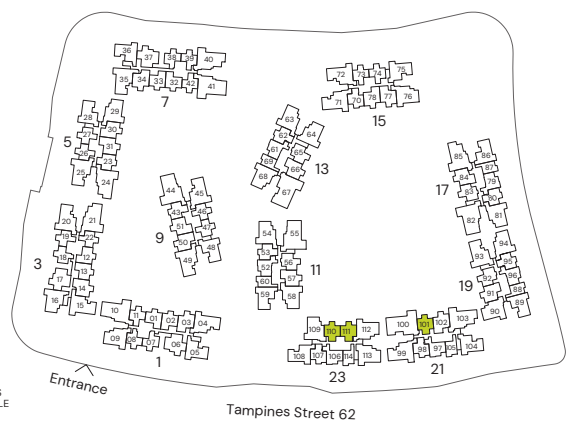


* Mirrored Unit



Area includes Private Enclosed Space (PES) or Balcony, where applicable. All AC ledges and RC ledges (non-load bearing) are excluded from strata area. The plans are subjected to change as may be required by relevant authorities. All areas and measurements stated herein as approximate and subject to final survey.

KEY PLAN IS NOT TO SCALE



2-BEDROOM PREMIUM

TYPE BP4

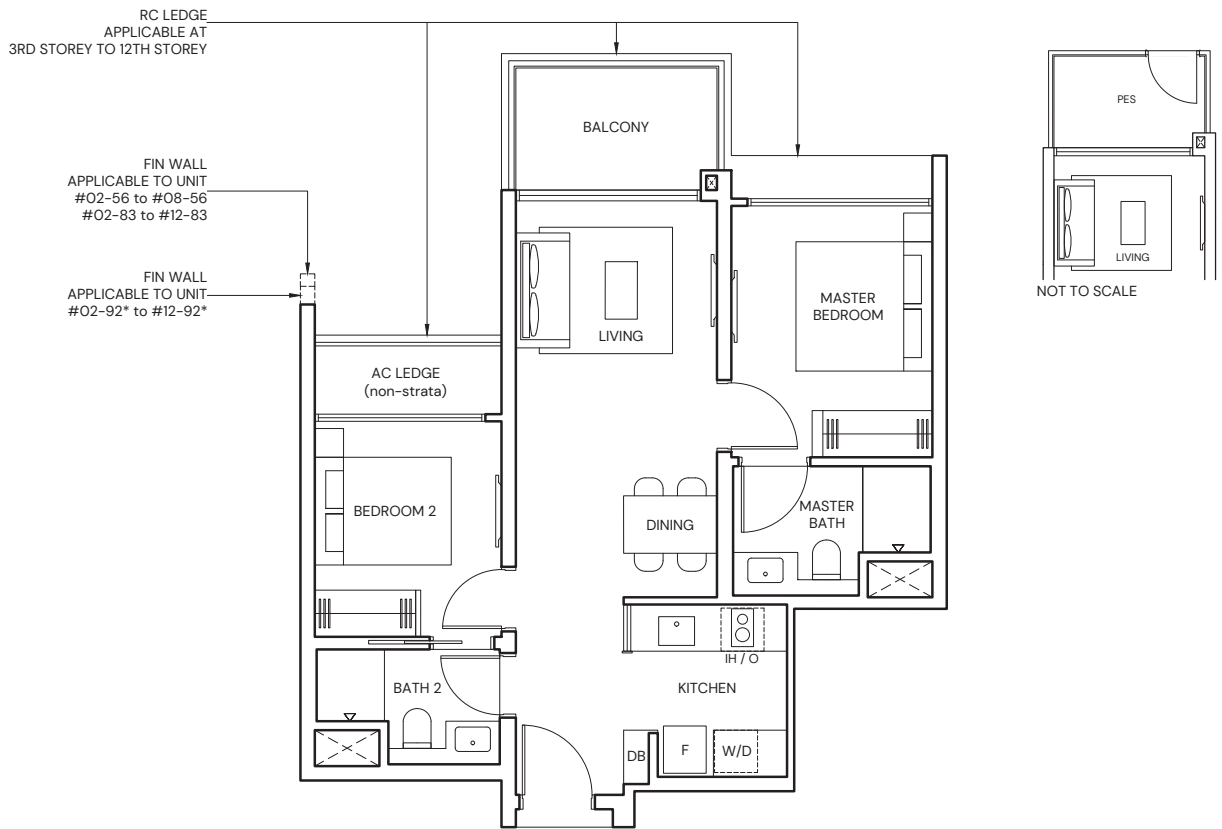
63 sqm / 678 sqft

BLK 11 #03-56 to #08-56
 BLK 13 #03-65 to #12-65
 BLK 17 #03-83 to #12-83
 BLK 19 #03-92* to #12-92*

TYPE BP4(p)

63 sqm / 678 sqft

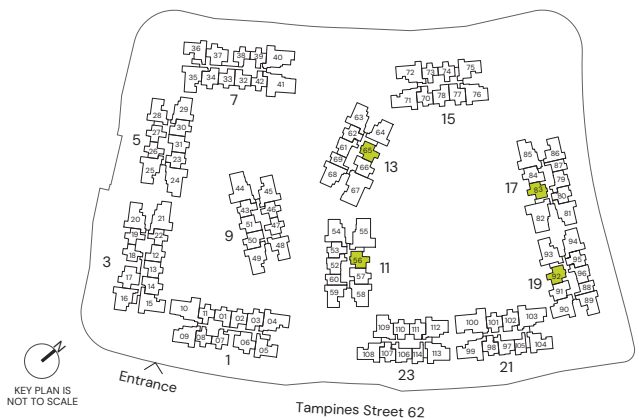
BLK 11 #02-56
 BLK 13 #02-65
 BLK 17 #02-83
 BLK 19 #02-92*



* Mirrored Unit



Area includes Private Enclosed Space (PES) or Balcony, where applicable. All AC ledges and RC ledges (non-load bearing) are excluded from strata area. The plans are subjected to change as may be required by relevant authorities. All areas and measurements stated herein as approximate and subject to final survey.



2-BEDROOM PREMIUM

TYPE BP5

67 sqm / 721 sqft

BLK 11 #02-52 to #07-52

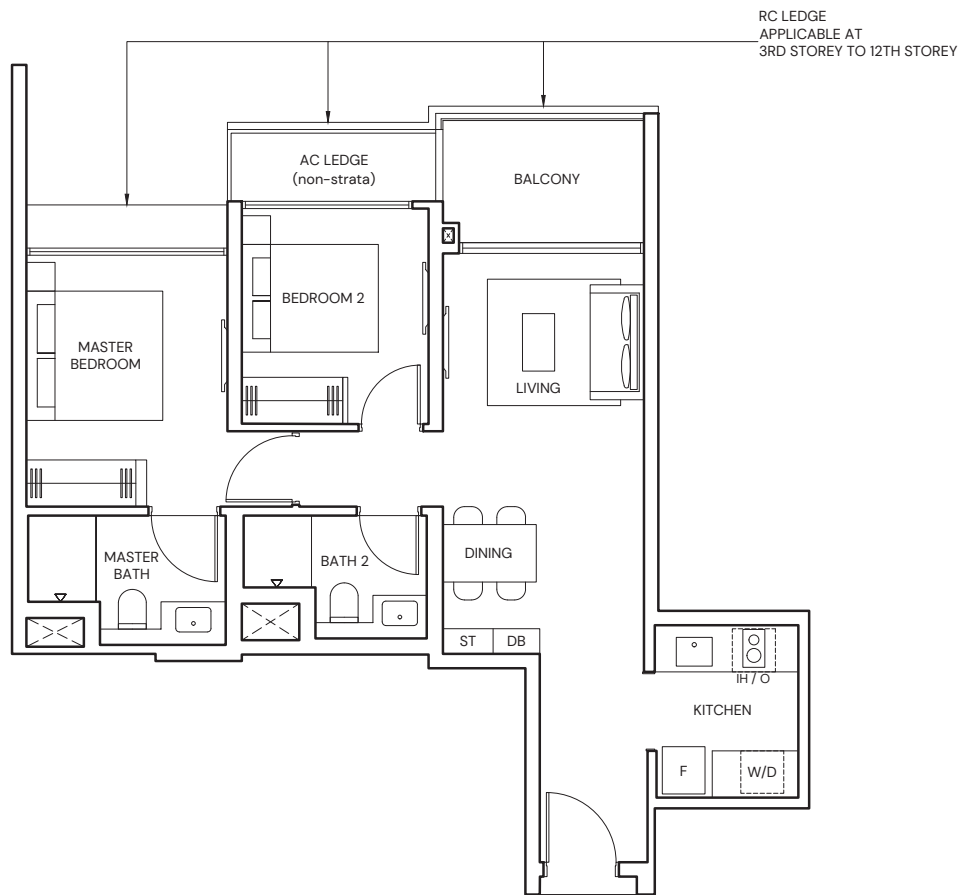
BLK 19 #02-96* to #12-96*

BLK 13 #02-61 to #12-61

BLK 21 #02-97 to #12-97

BLK 17 #02-79 to #12-79

BLK 23 #02-106 to #12-106

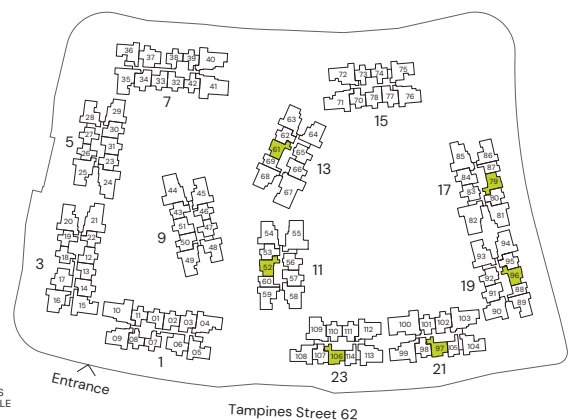


* Mirrored Unit



Area includes Private Enclosed Space (PES) or Balcony, where applicable. All AC ledges and RC ledges (non-load bearing) are excluded from strata area. The plans are subjected to change as may be required by relevant authorities. All areas and measurements stated herein as approximate and subject to final survey.

KEY PLAN IS NOT TO SCALE



2-BEDROOM PREMIUM + STUDY

TYPE BPS1

71 sqm / 764 sqft

BLK 1 #03-03 to #12-03
 BLK 5 #03-30* to #13-30*
 BLK 5 #03-31 to #13-31
 BLK 9 #03-50* to #08-50*

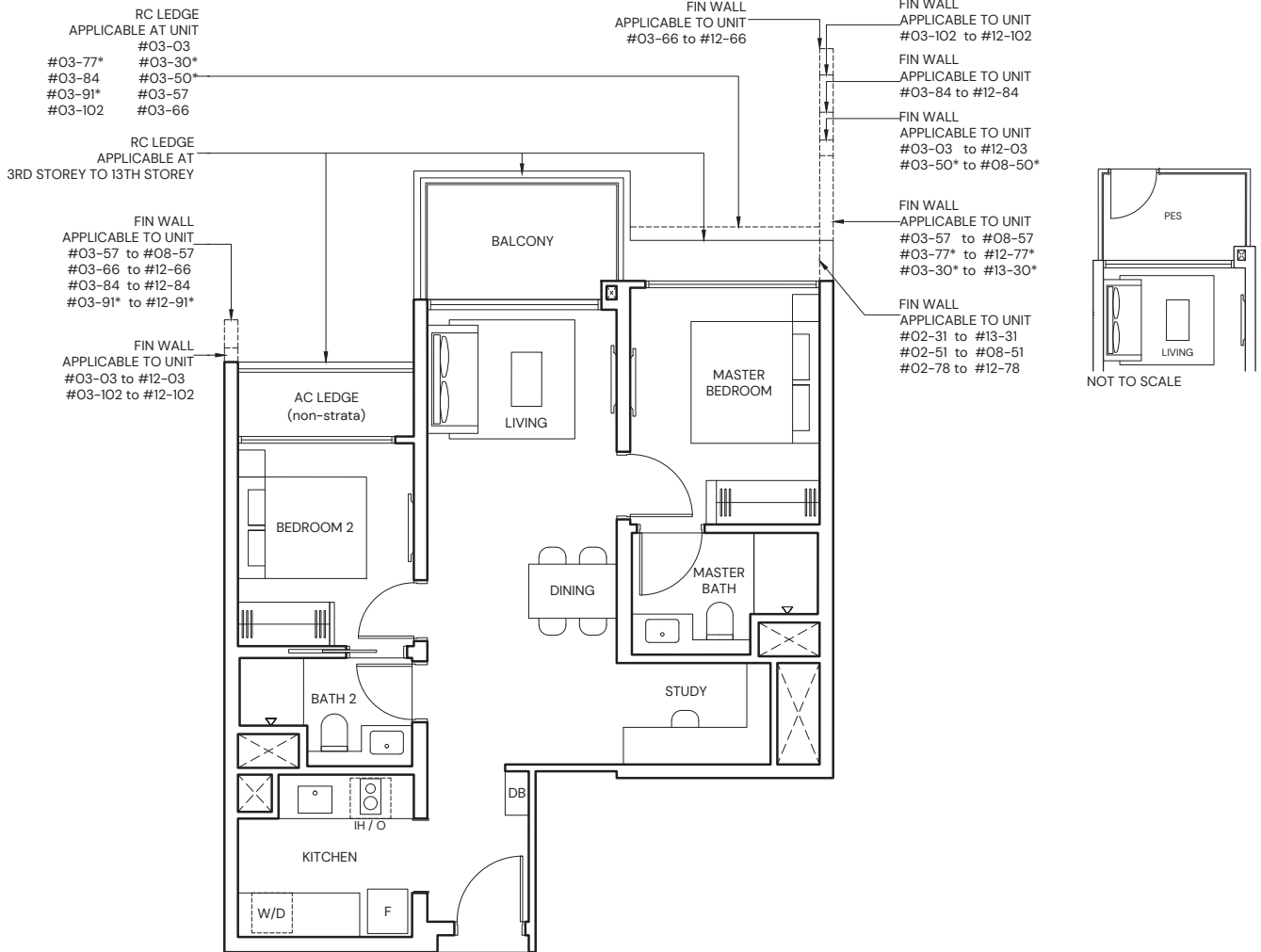
BLK 9 #03-51 to #08-51
 BLK 11 #03-57 to #08-57
 BLK 13 #03-66 to #12-66
 BLK 15 #03-77* to #12-77*

BLK 15 #03-78 to #12-78
 BLK 17 #03-84 to #12-84
 BLK 19 #03-91* to #12-91*
 BLK 21 #03-102 to #12-102

TYPE BPS1(p)

71 sqm / 764 sqft

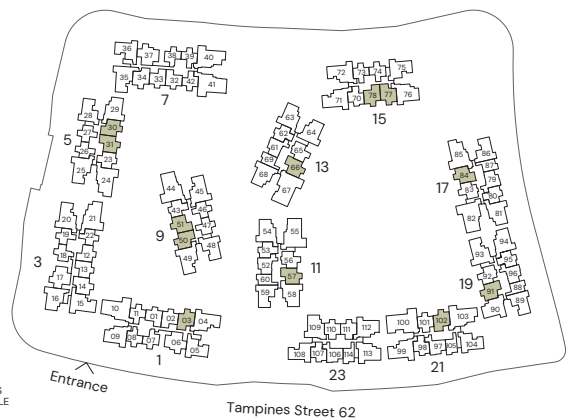
BLK 5 #02-31
 BLK 9 #02-51
 BLK 15 #02-78



* Mirrored Unit



Area includes Private Enclosed Space (PES) or Balcony, where applicable. All AC ledges and RC ledges (non-load bearing) are excluded from strata area. The plans are subjected to change as may be required by relevant authorities. All areas and measurements stated herein as approximate and subject to final survey.



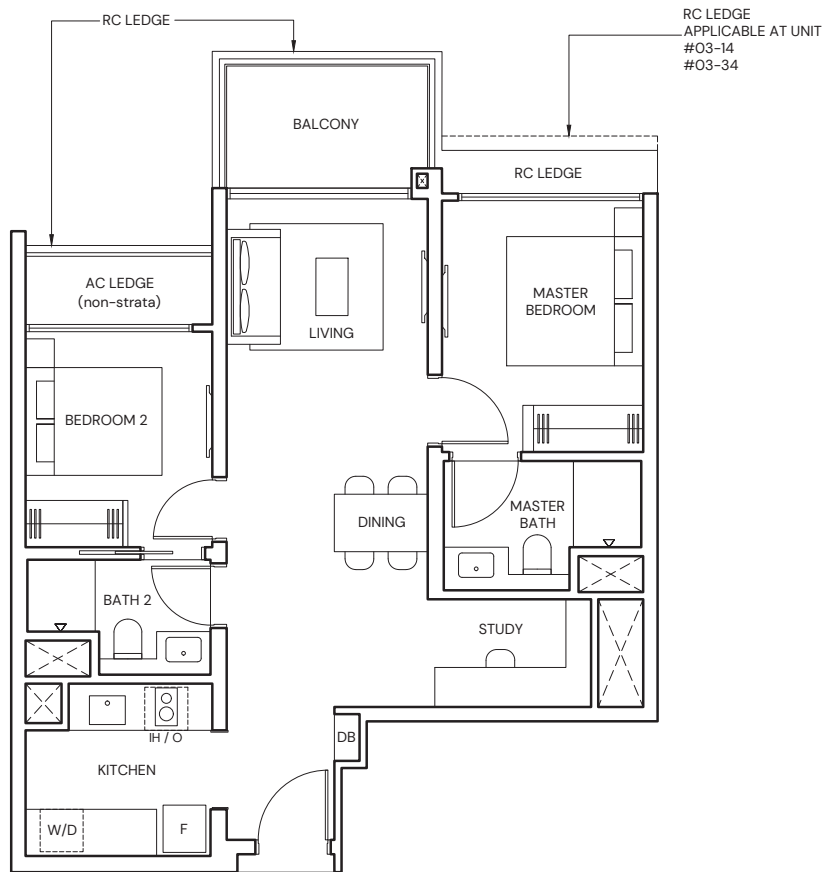
2-BEDROOM PREMIUM + STUDY

TYPE BPS2

71 sqm / 764 sqft

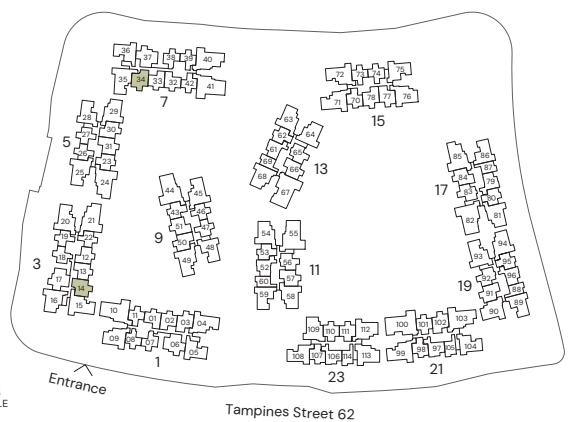
BLK 3 #03-14 to #13-14

BLK 7 #03-34 to #12-34



Area includes Private Enclosed Space (PES) or Balcony, where applicable. All AC ledges and RC ledges (non-load bearing) are excluded from strata area. The plans are subjected to change as may be required by relevant authorities. All areas and measurements stated herein as approximate and subject to final survey.

KEY PLAN IS NOT TO SCALE



3-BEDROOM

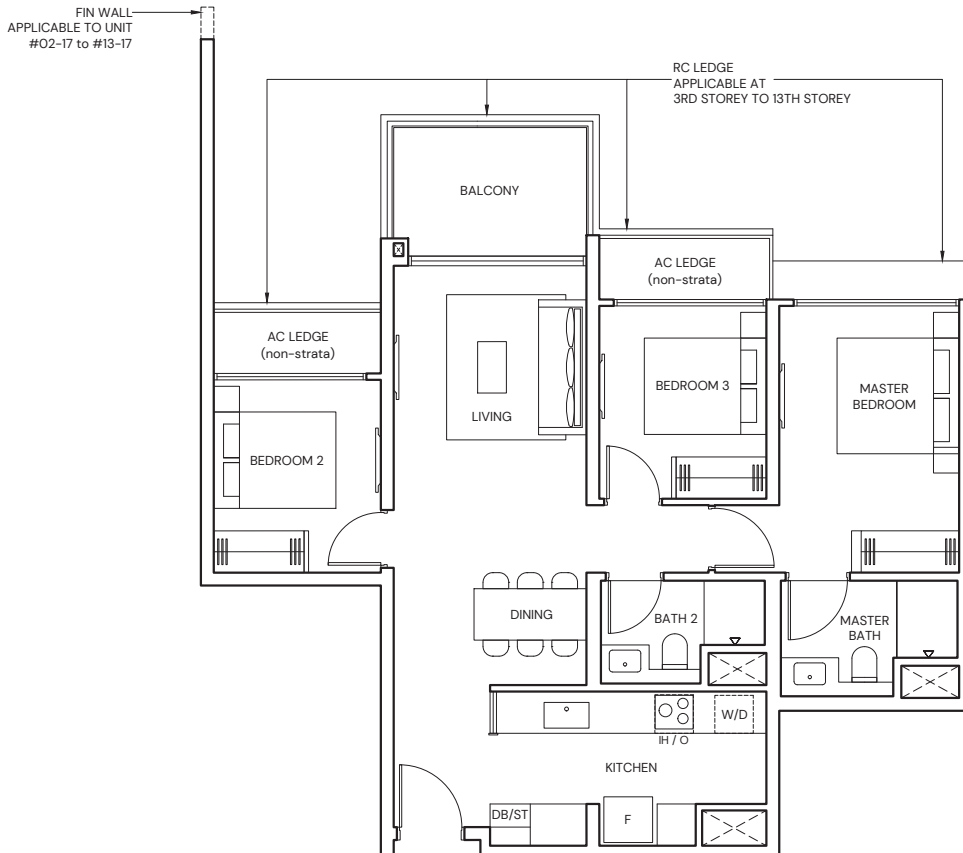
TYPE C1

86 sqm / 926 sqft

BLK 1 #02-06 to #12-06

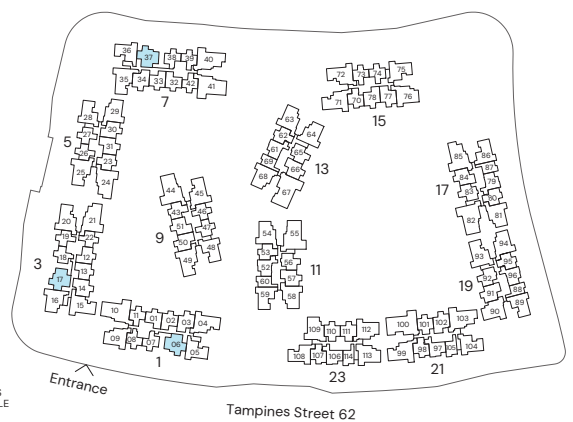
BLK 3 #02-17 to #13-17

BLK 7 #02-37 to #12-37



Area includes Private Enclosed Space (PES) or Balcony, where applicable. All AC ledges and RC ledges (non-load bearing) are excluded from strata area. The plans are subjected to change as may be required by relevant authorities. All areas and measurements stated herein as approximate and subject to final survey.

KEY PLAN IS NOT TO SCALE



3-BEDROOM

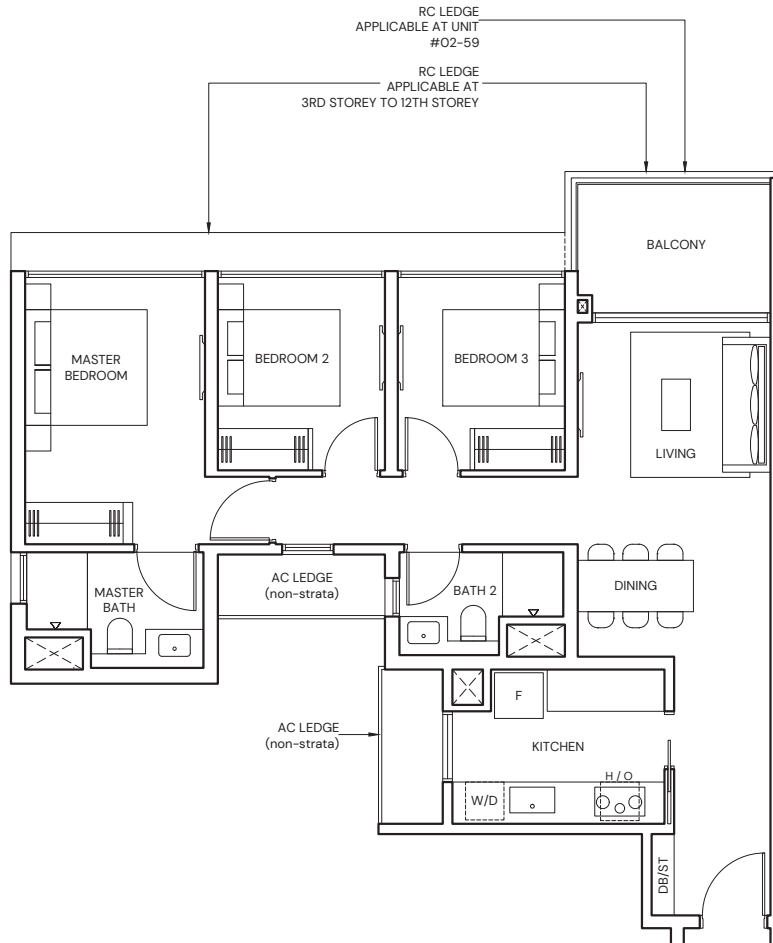
TYPE C2

87 sqm / 936 sqft

BLK 11 #02-59 to #07-59

BLK 17 #02-86 to #12-86

BLK 19 #02-89* to #12-89*

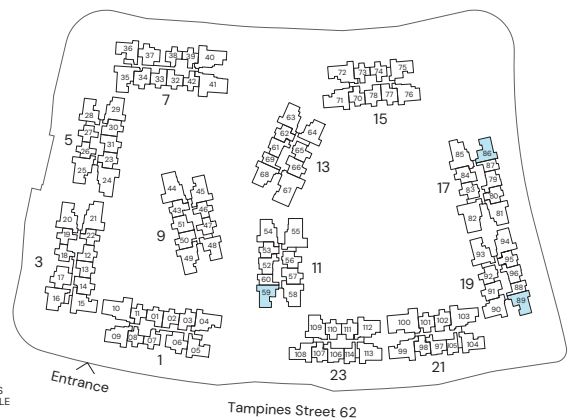


* Mirrored Unit



Area includes Private Enclosed Space (PES) or Balcony, where applicable. All AC ledges and RC ledges (non-load bearing) are excluded from strata area. The plans are subjected to change as may be required by relevant authorities. All areas and measurements stated herein as approximate and subject to final survey.

KEY PLAN IS NOT TO SCALE



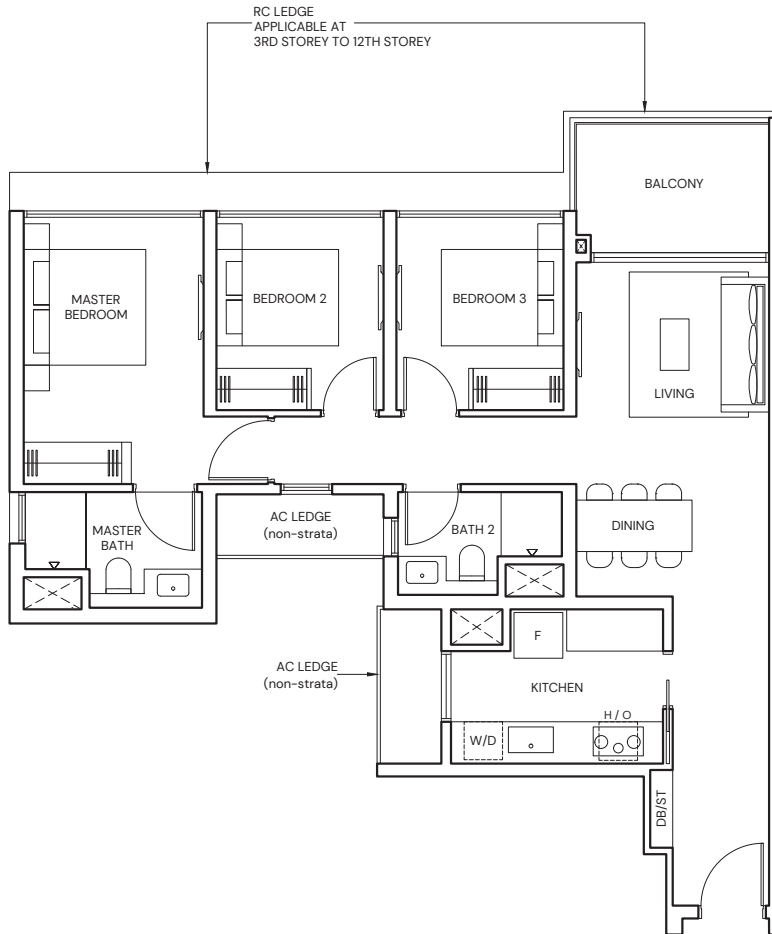
3-BEDROOM

TYPE C3

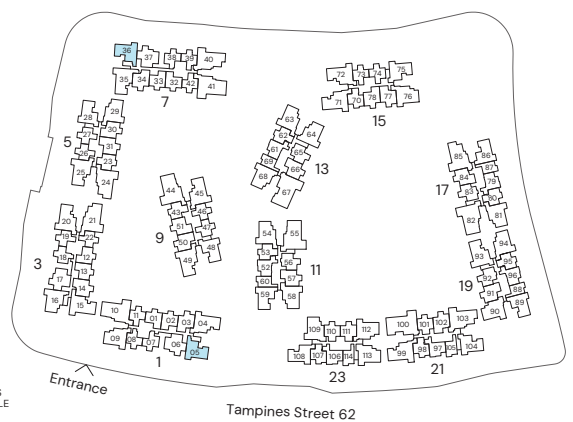
88 sqm / 947 sqft

BLK 1 #02-05 to #12-05

BLK 7 #02-36 to #12-36



Area includes Private Enclosed Space (PES) or Balcony, where applicable. All AC ledges and RC ledges (non-load bearing) are excluded from strata area. The plans are subjected to change as may be required by relevant authorities. All areas and measurements stated herein as approximate and subject to final survey.



3-BEDROOM

TYPE C4

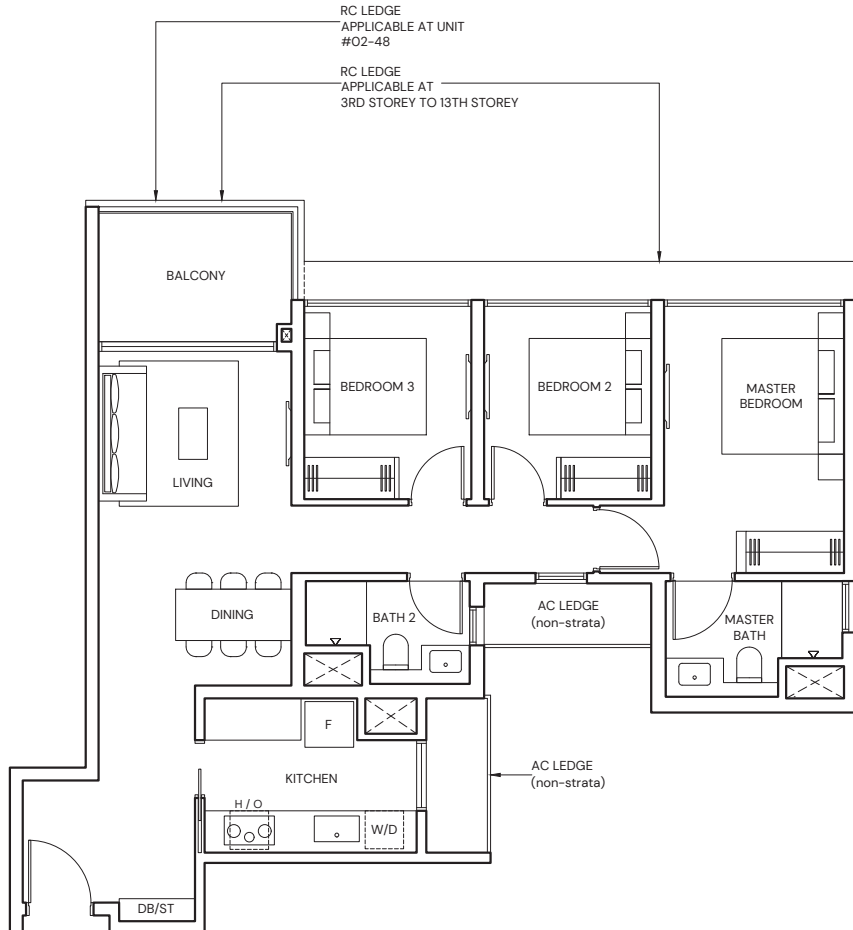
88 sqm / 947 sqft

BLK 5 #02-28 to #13-28

BLK 9 #02-48 to #07-48

BLK 15 #02-75 to #12-75

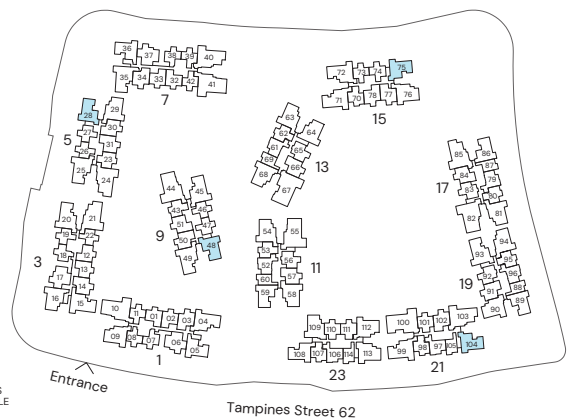
BLK 21 #02-104* to #12-104*



* Mirrored Unit



Area includes Private Enclosed Space (PES) or Balcony, where applicable. All AC ledges and RC ledges (non-load bearing) are excluded from strata area. The plans are subjected to change as may be required by relevant authorities. All areas and measurements stated herein as approximate and subject to final survey.

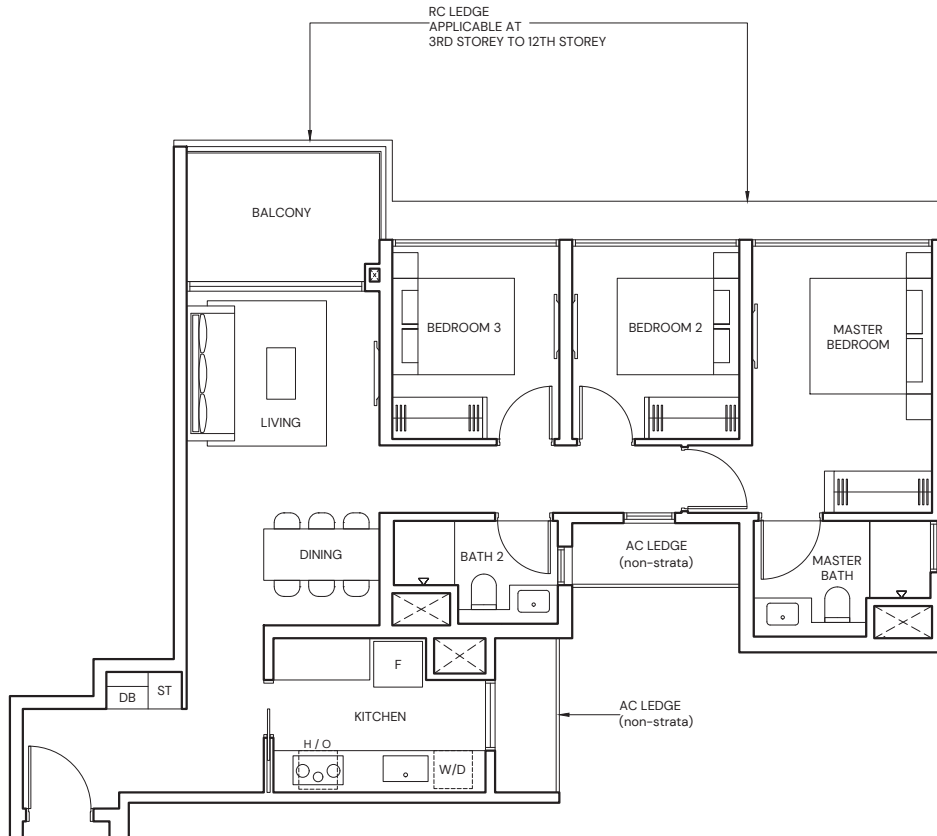


3-BEDROOM

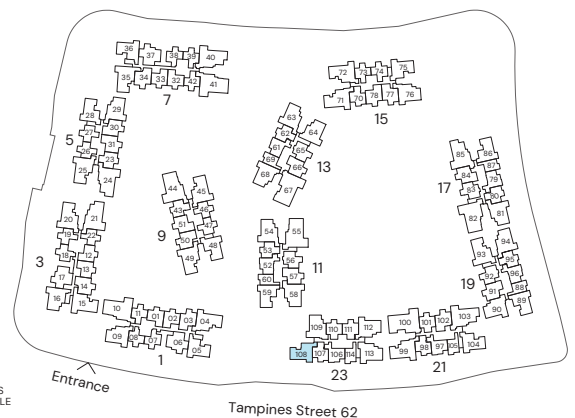
TYPE C5

88 sqm / 947 sqft

BLK 23 #02-108 to #12-108



Area includes Private Enclosed Space (PES) or Balcony, where applicable. All AC ledges and RC ledges (non-load bearing) are excluded from strata area. The plans are subjected to change as may be required by relevant authorities. All areas and measurements stated herein as approximate and subject to final survey.



3-BEDROOM PREMIUM

TYPE CP1

99 sqm / 1066 sqft

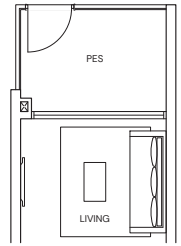
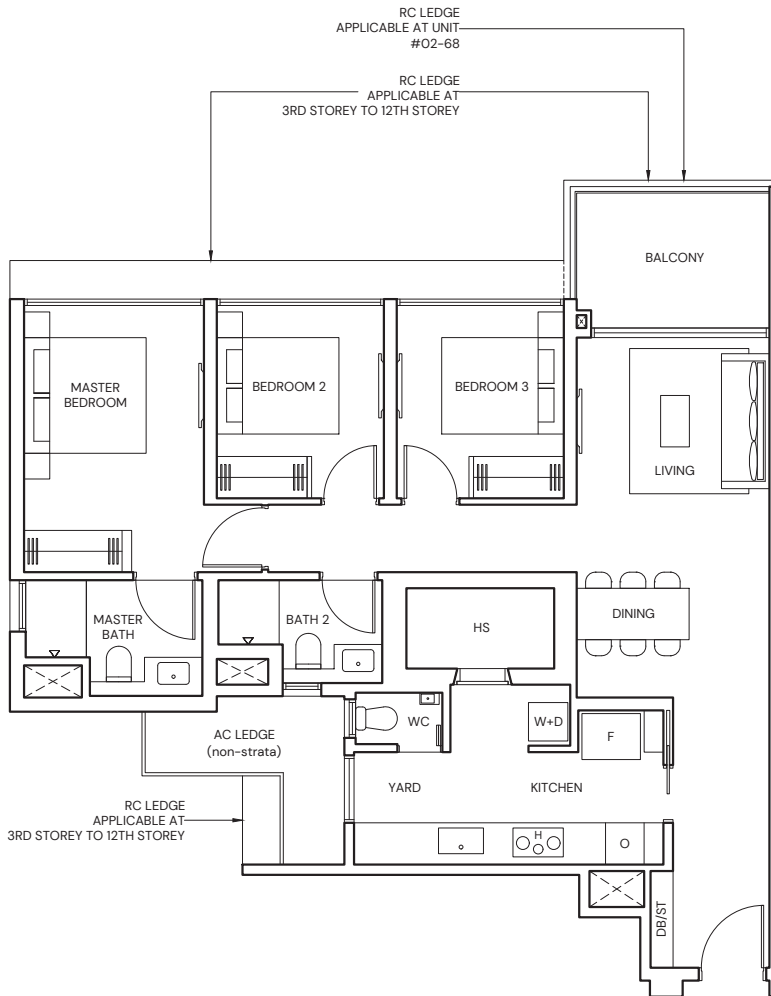
BLK 13 #03-64 to #12-64

BLK 13 #02-68 to #12-68

TYPE CP1(p)

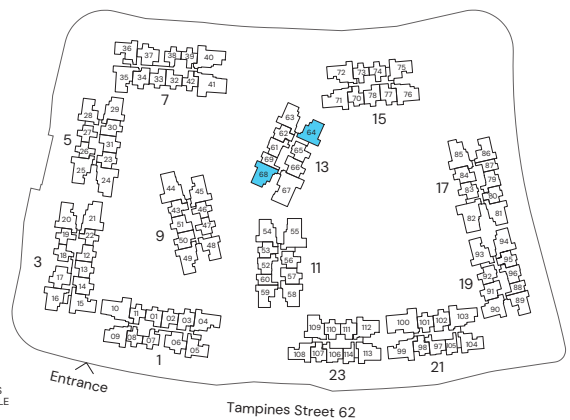
99 sqm / 1066 sqft

BLK 13 #02-64



Area includes Private Enclosed Space (PES) or Balcony, where applicable. All AC ledges and RC ledges (non-load bearing) are excluded from strata area. The plans are subjected to change as may be required by relevant authorities. All areas and measurements stated herein as approximate and subject to final survey.

KEY PLAN IS NOT TO SCALE

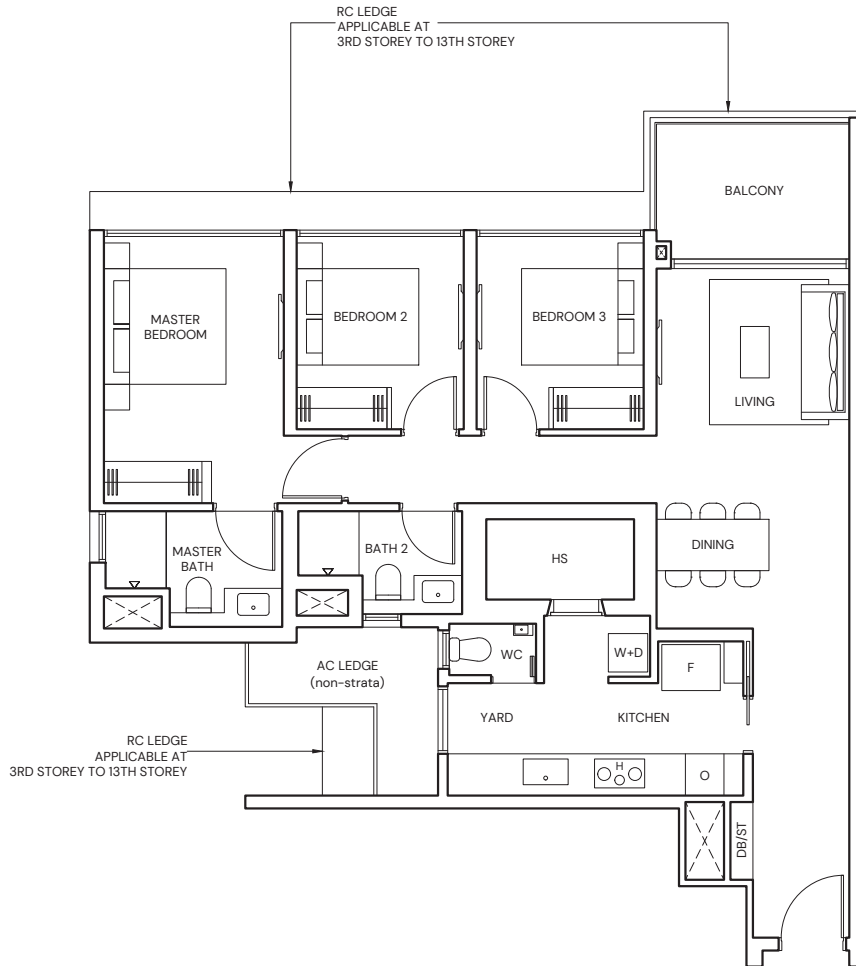


3-BEDROOM PREMIUM

TYPE CP2

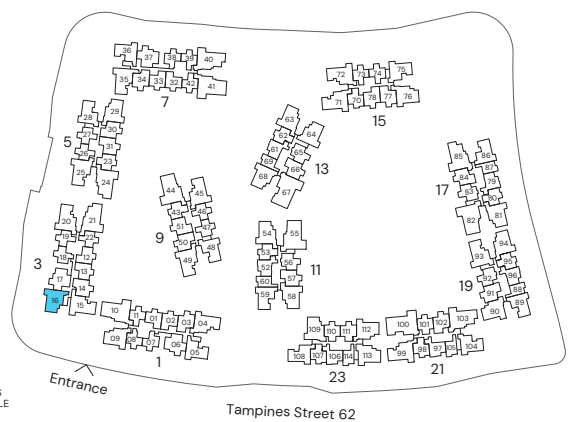
99 sqm / 1066 sqft

BLK 3 #02-16 to #13-16



Area includes Private Enclosed Space (PES) or Balcony, where applicable. All AC ledges and RC ledges (non-load bearing) are excluded from strata area. The plans are subjected to change as may be required by relevant authorities. All areas and measurements stated herein as approximate and subject to final survey.

KEY PLAN IS NOT TO SCALE



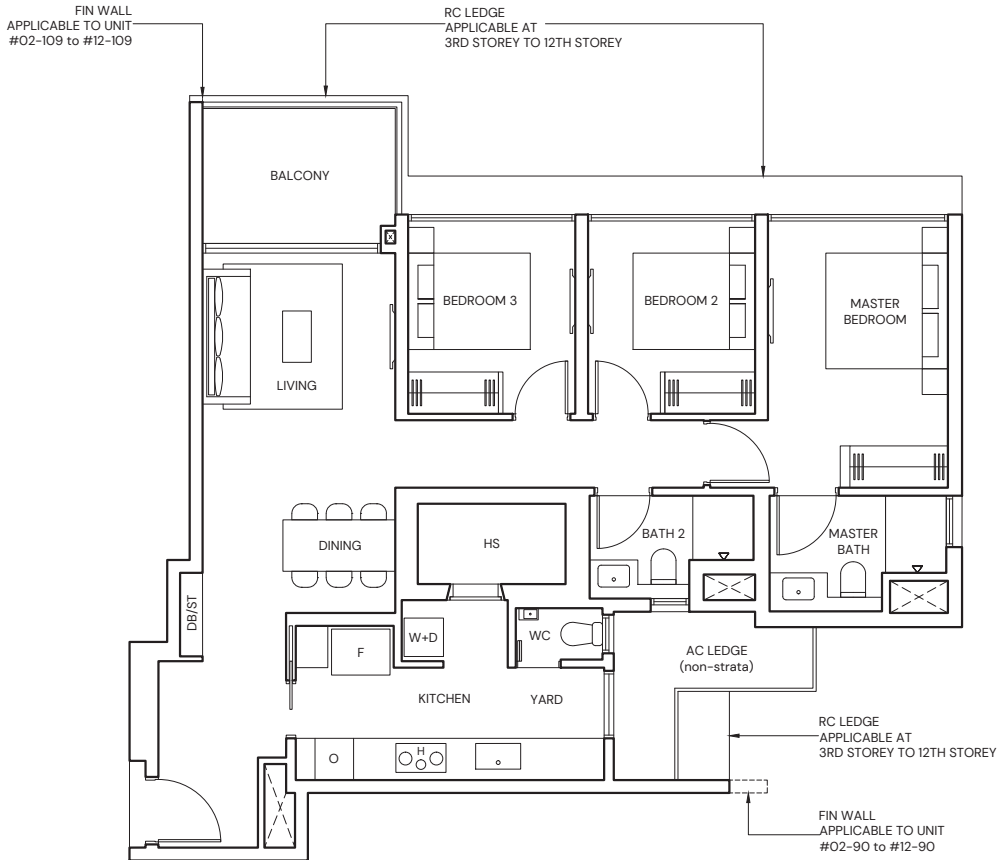
3-BEDROOM PREMIUM

TYPE CP3

99 sqm / 1066 sqft

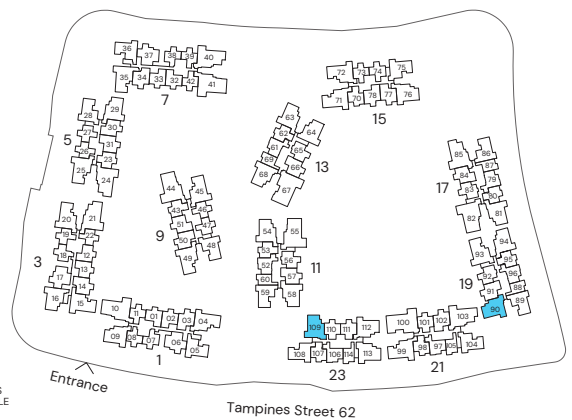
BLK 19 #02-90 to #12-90

BLK 23 #02-109 to #12-109



Area includes Private Enclosed Space (PES) or Balcony, where applicable. All AC ledges and RC ledges (non-load bearing) are excluded from strata area. The plans are subjected to change as may be required by relevant authorities. All areas and measurements stated herein as approximate and subject to final survey.

KEY PLAN IS NOT TO SCALE

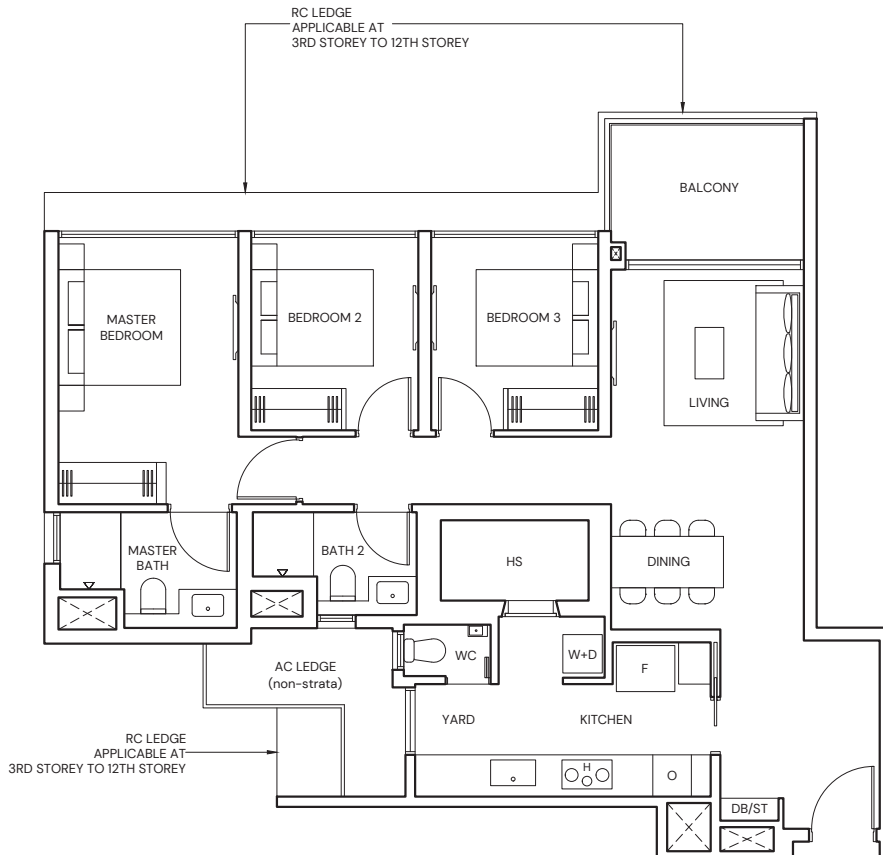


3-BEDROOM PREMIUM

TYPE CP4

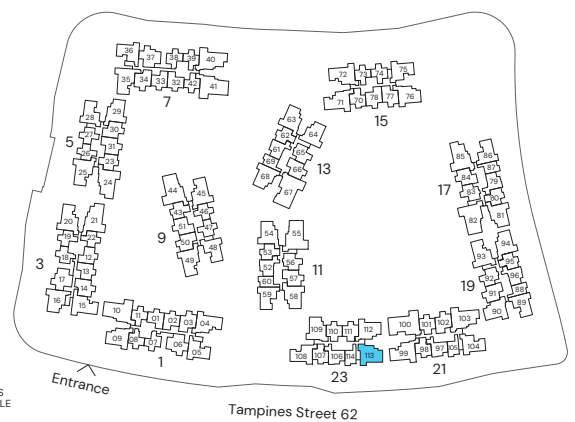
99 sqm / 1066 sqft

BLK 23 #02-113 to #12-113



Area includes Private Enclosed Space (PES) or Balcony, where applicable. All AC ledges and RC ledges (non-load bearing) are excluded from strata area. The plans are subjected to change as may be required by relevant authorities. All areas and measurements stated herein as approximate and subject to final survey.

KEY PLAN IS
NOT TO SCALE



3-BEDROOM PREMIUM

TYPE CP5

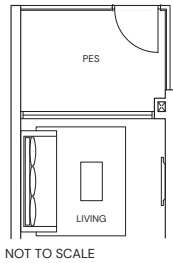
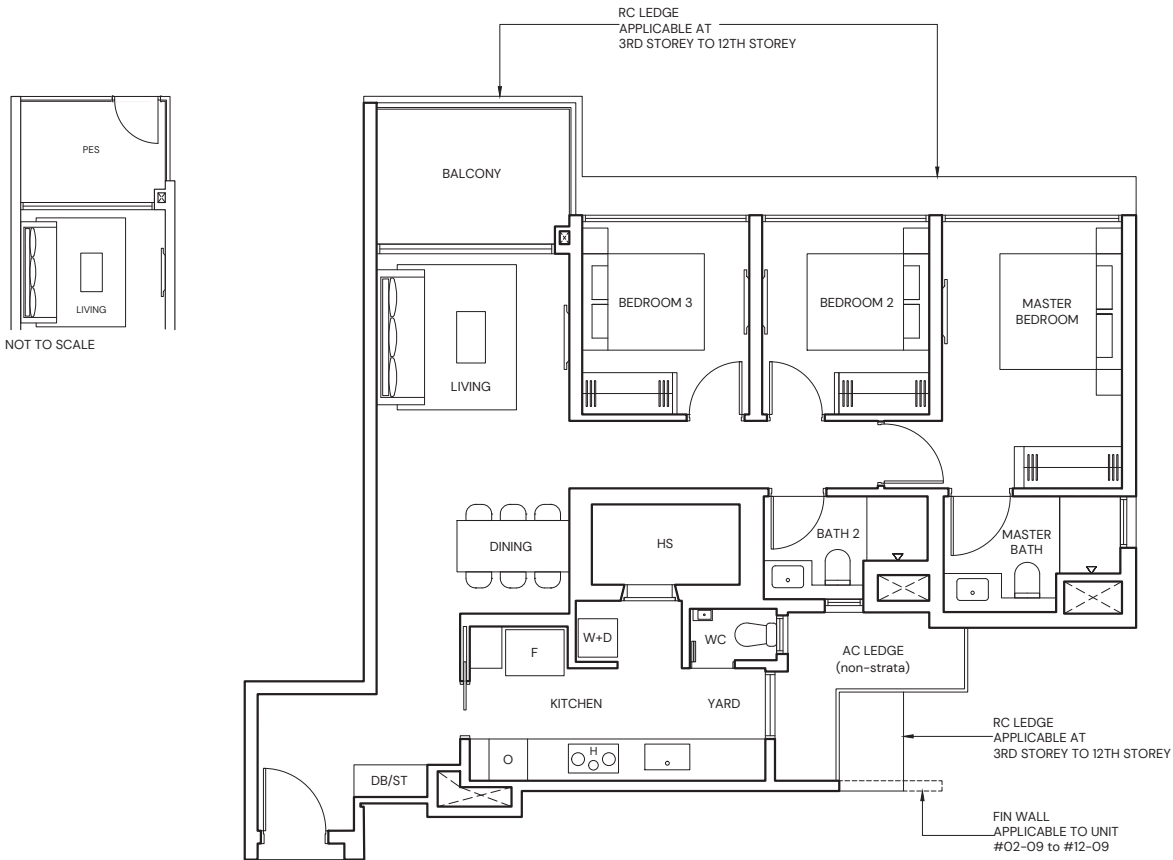
99 sqm / 1066 sqft

BLK 1 #02-09 to #12-09
BLK 11 #03-58 to #08-58

TYPE CP5(p)

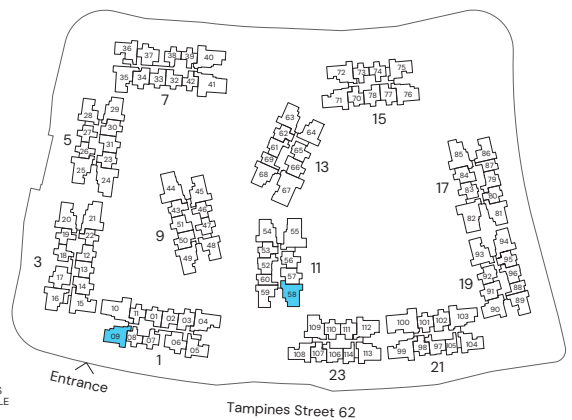
99 sqm / 1066 sqft

BLK 11 #02-58



Area includes Private Enclosed Space (PES) or Balcony, where applicable. All AC ledges and RC ledges (non-load bearing) are excluded from strata area. The plans are subjected to change as may be required by relevant authorities. All areas and measurements stated herein as approximate and subject to final survey.

KEY PLAN IS NOT TO SCALE



3-BEDROOM PREMIUM

TYPE CP6

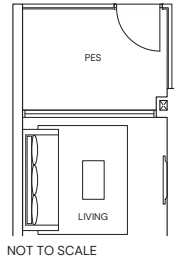
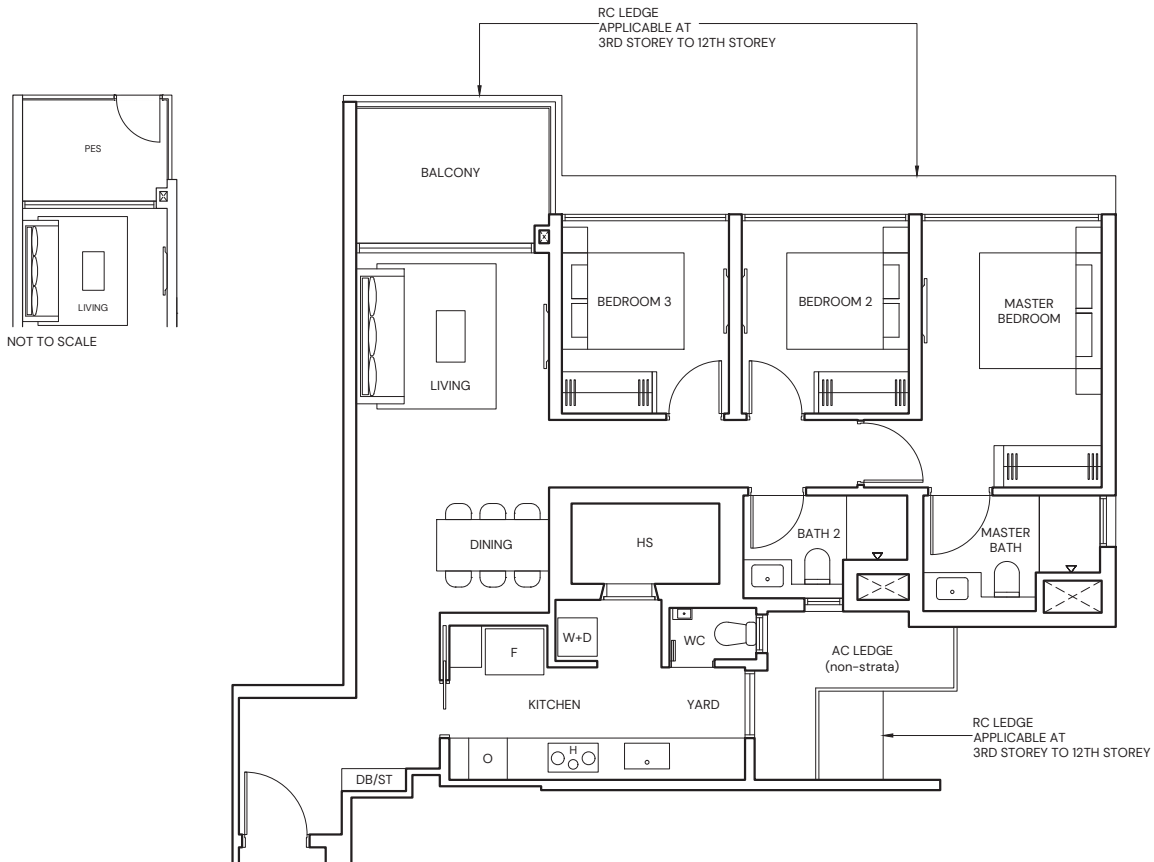
99 sqm / 1066 sqft

BLK 23 #03-112 to #12-112

TYPE CP6(p)

99 sqm / 1066 sqft

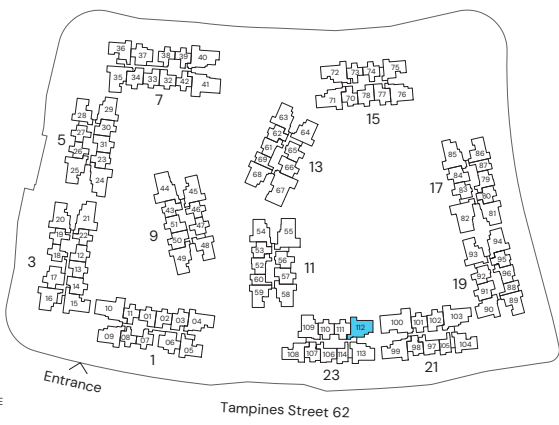
BLK 23 #02-112



NOT TO SCALE



Area includes Private Enclosed Space (PES) or Balcony, where applicable. All AC ledges and RC ledges (non-load bearing) are excluded from strata area. The plans are subjected to change as may be required by relevant authorities. All areas and measurements stated herein as approximate and subject to final survey.



KEY PLAN IS NOT TO SCALE

Tampines Street 62

3-BEDROOM PREMIUM

TYPE CP7

100 sqm / 1076 sqft

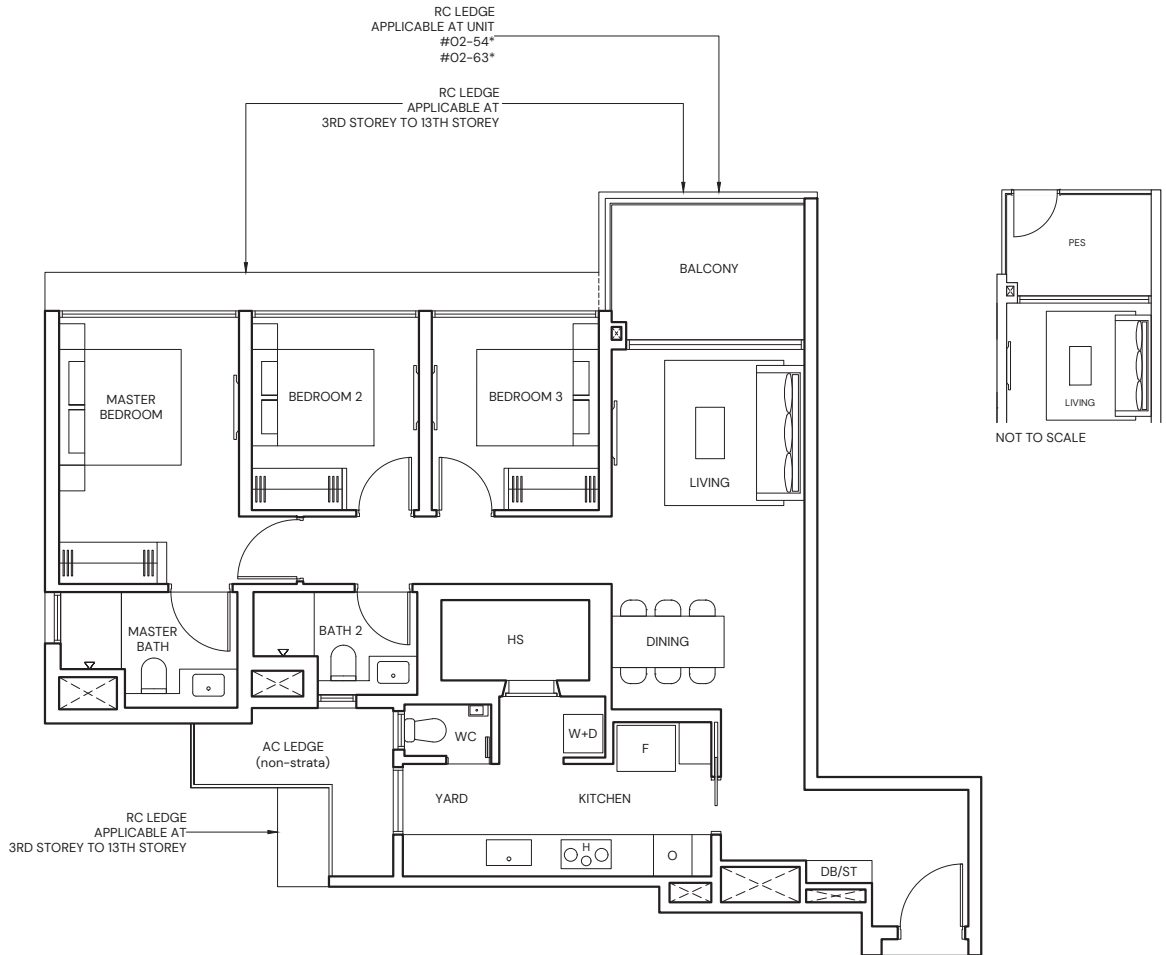
BLK 5 #03-29 to #13-29
 BLK 11 #02-54* to #07-54*
 BLK 13 #02-63* to #12-63*

BLK 15 #03-76 to #12-76
 BLK 17 #03-81* to #12-81*
 BLK 19 #02-94 to #12-94

TYPE CP7(p)

100 sqm / 1076 sqft

BLK 5 #02-29
 BLK 15 #02-76

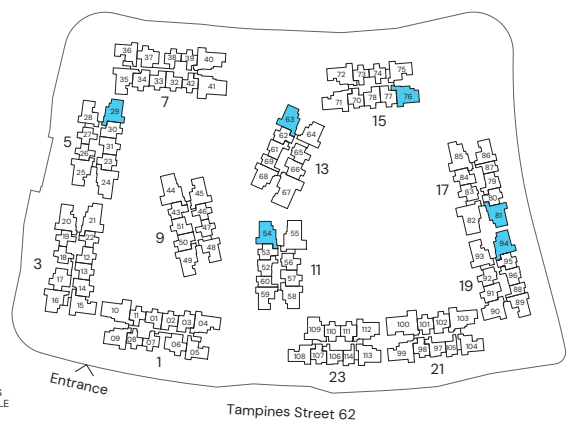


* Mirrored Unit



Area includes Private Enclosed Space (PES) or Balcony, where applicable. All AC ledges and RC ledges (non-load bearing) are excluded from strata area. The plans are subjected to change as may be required by relevant authorities. All areas and measurements stated herein as approximate and subject to final survey.

KEY PLAN IS NOT TO SCALE

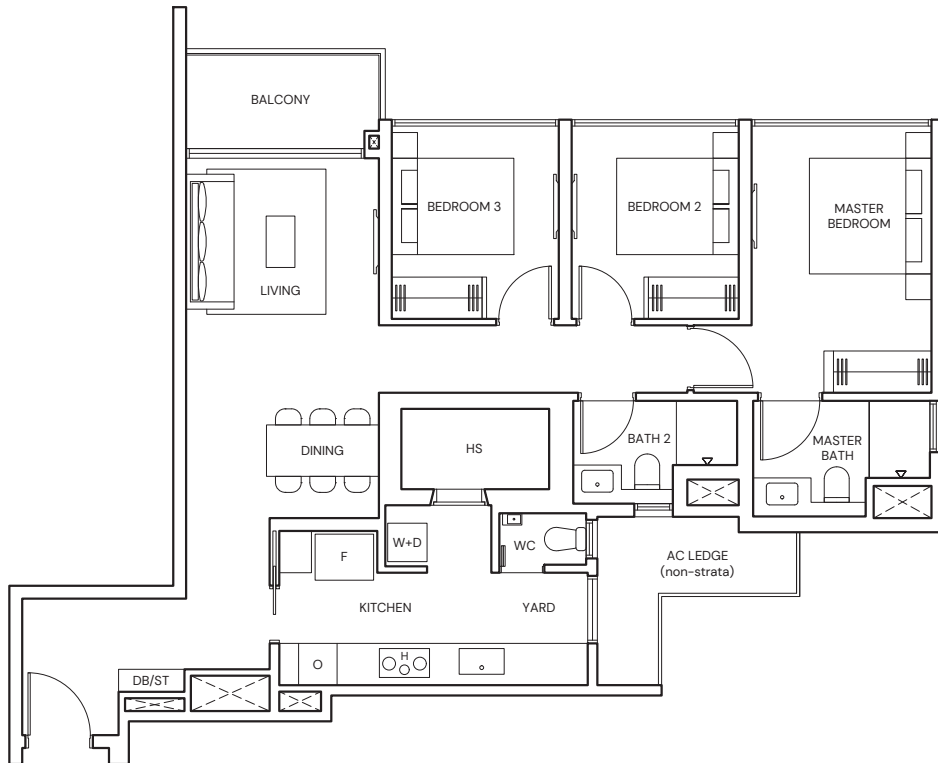


3-BEDROOM PREMIUM

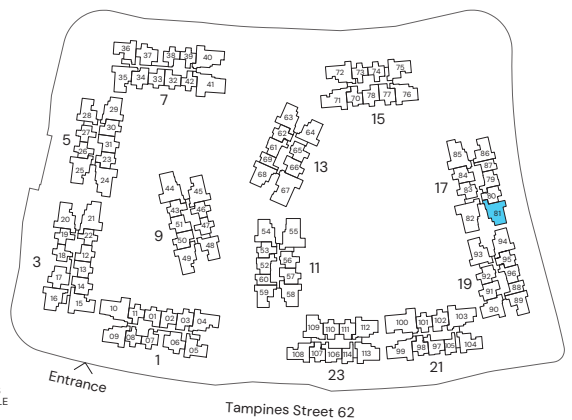
TYPE CP8

98 sqm / 1055 sqft

BLK 17 #02-81



Area includes Private Enclosed Space (PES) or Balcony, where applicable. All AC ledges and RC ledges (non-load bearing) are excluded from strata area. The plans are subjected to change as may be required by relevant authorities. All areas and measurements stated herein as approximate and subject to final survey.



KEY PLAN IS NOT TO SCALE

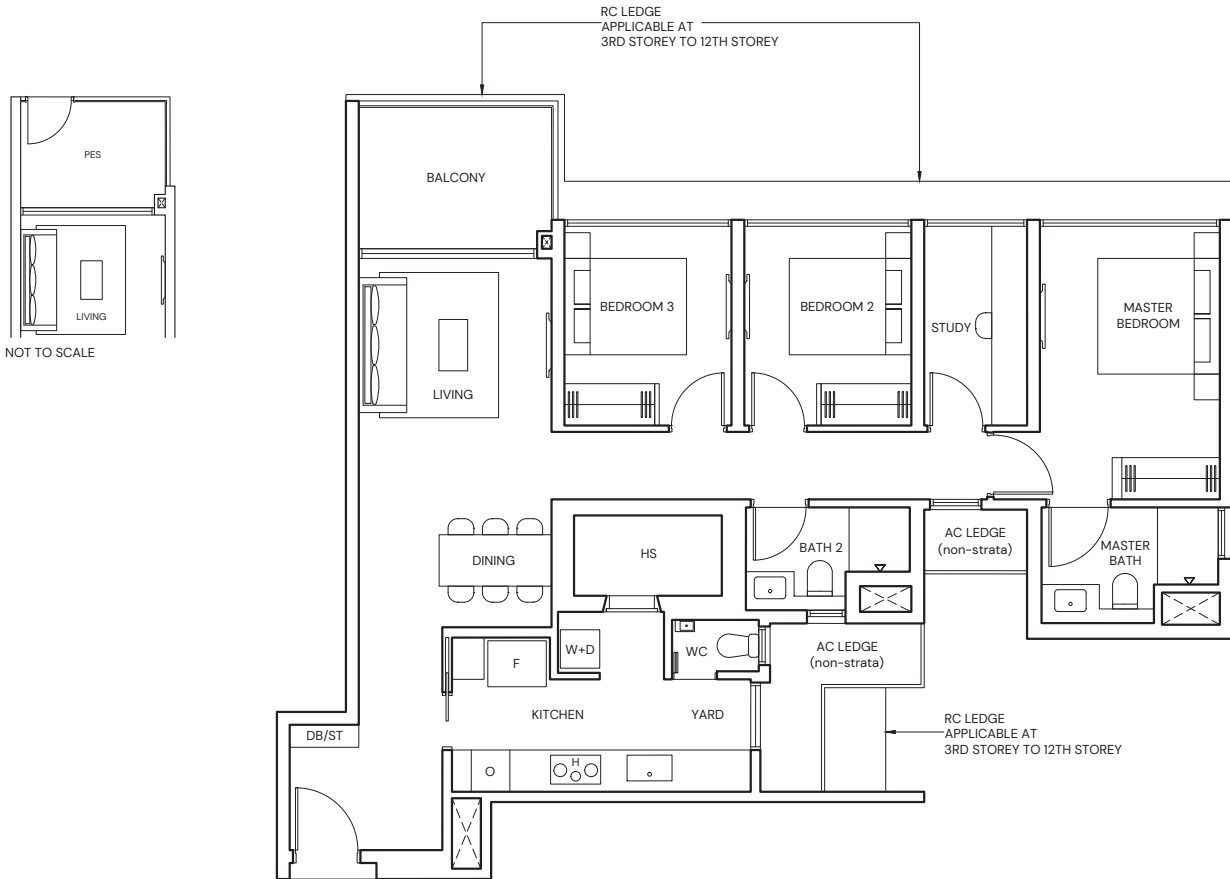
3-BEDROOM PREMIUM + STUDY

TYPE CPS1
108 sqm / 1163 sqft

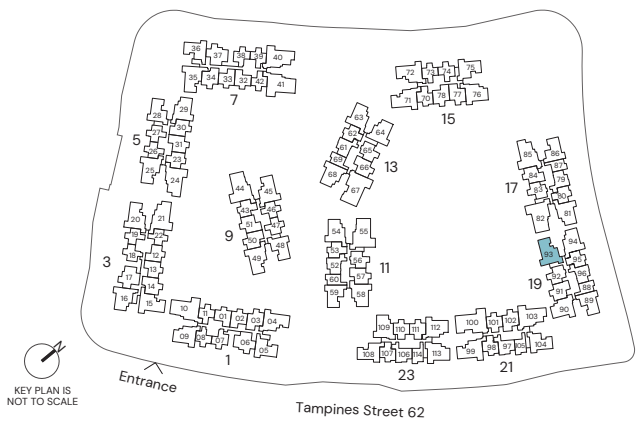
BLK 19 #03-93 to #12-93

TYPE CPS1(p)
108 sqm / 1163 sqft

BLK 19 #02-93



Area includes Private Enclosed Space (PES) or Balcony, where applicable. All AC ledges and RC ledges (non-load bearing) are excluded from strata area. The plans are subjected to change as may be required by relevant authorities. All areas and measurements stated herein as approximate and subject to final survey.



3-BEDROOM PREMIUM + STUDY

TYPE CPS2

108 sqm / 1163 sqft

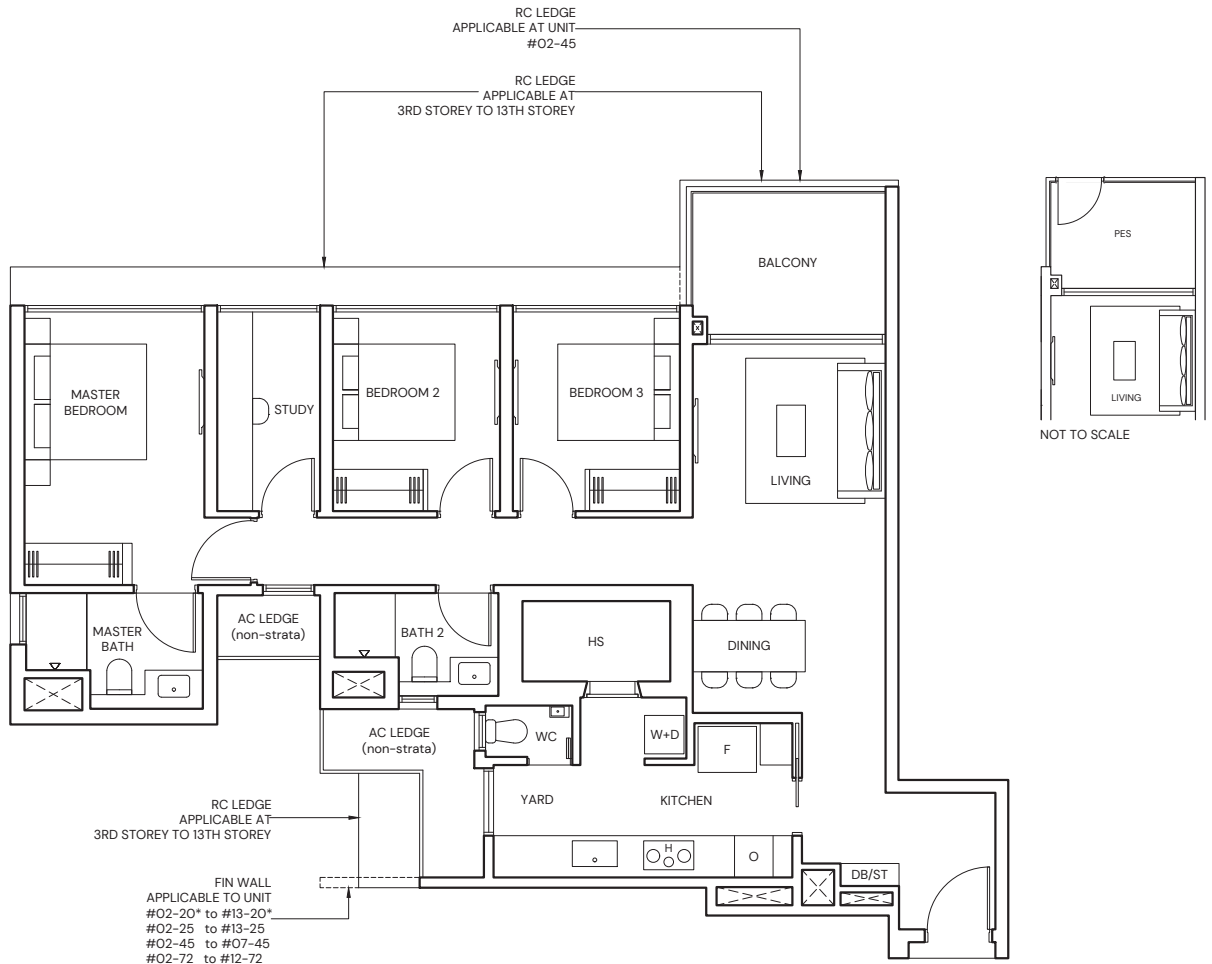
BLK 1 #03-04* to #12-04*
BLK 3 #02-20* to #13-20*

BLK 5 #02-25 to #13-25
BLK 9 #02-45 to #07-45
BLK 15 #02-72 to #12-72

TYPE CPS2(p)

108 sqm / 1163 sqft

BLK 1 #02-04*

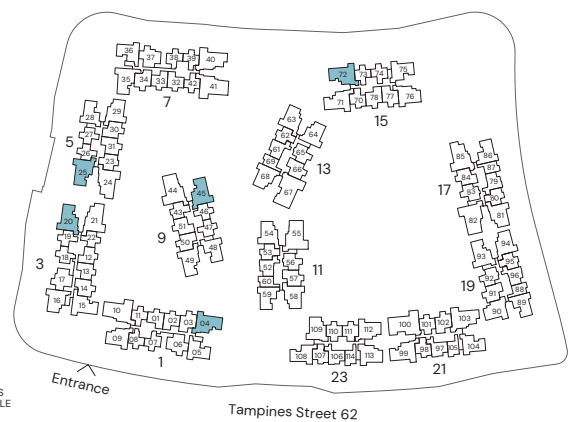


* Mirrored Unit



Area includes Private Enclosed Space (PES) or Balcony, where applicable. All AC ledges and RC ledges (non-load bearing) are excluded from strata area. The plans are subjected to change as may be required by relevant authorities. All areas and measurements stated herein as approximate and subject to final survey.

KEY PLAN IS NOT TO SCALE



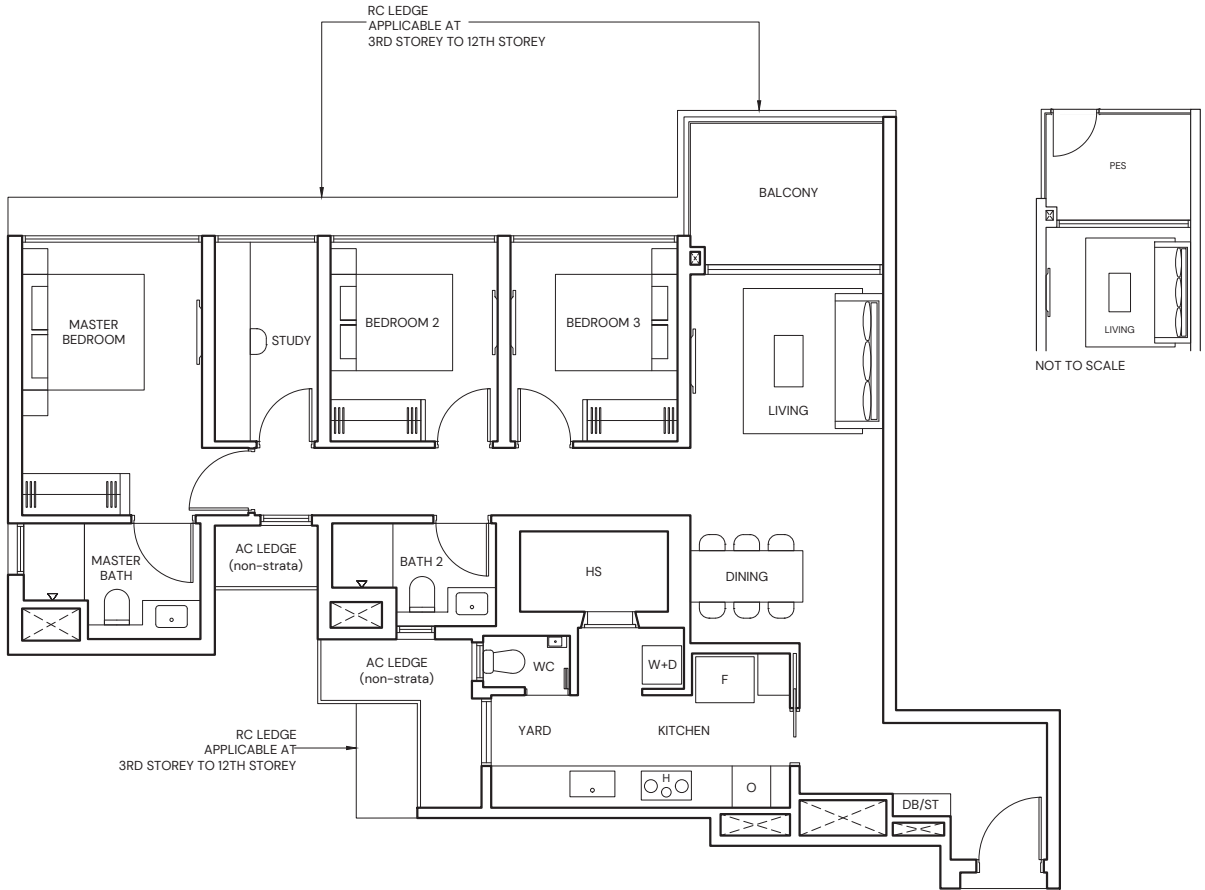
3-BEDROOM PREMIUM + STUDY

TYPE CPS3
109 sqm / 1173 sqft

BLK 9 #03-49 to #08-49
BLK 15 #03-71* to #12-71*

TYPE CPS3(p)
109 sqm / 1173 sqft

BLK 9 #02-49
BLK 15 #02-71*

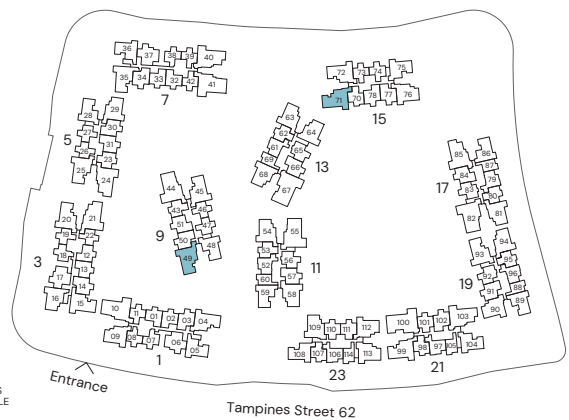


* Mirrored Unit



Area includes Private Enclosed Space (PES) or Balcony, where applicable. All AC ledges and RC ledges (non-load bearing) are excluded from strata area. The plans are subjected to change as may be required by relevant authorities. All areas and measurements stated herein as approximate and subject to final survey.

KEY PLAN IS NOT TO SCALE

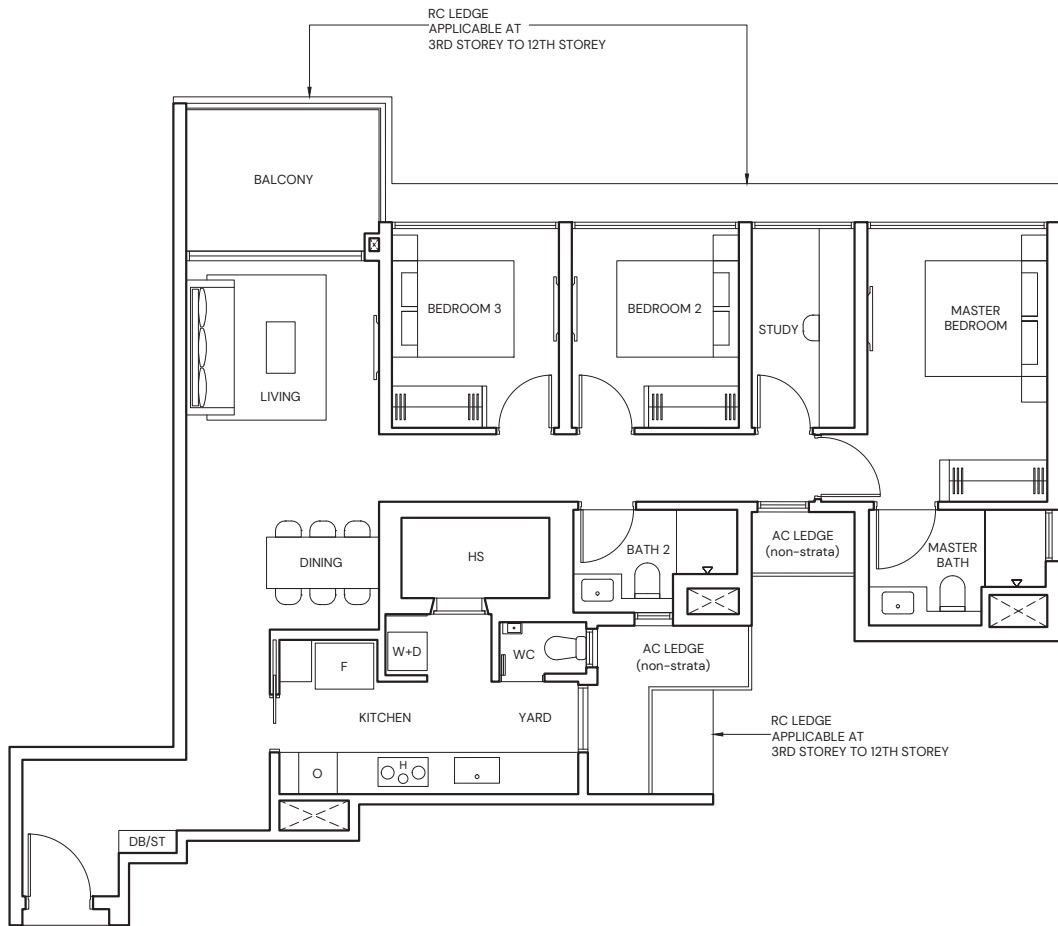


3-BEDROOM PREMIUM + STUDY

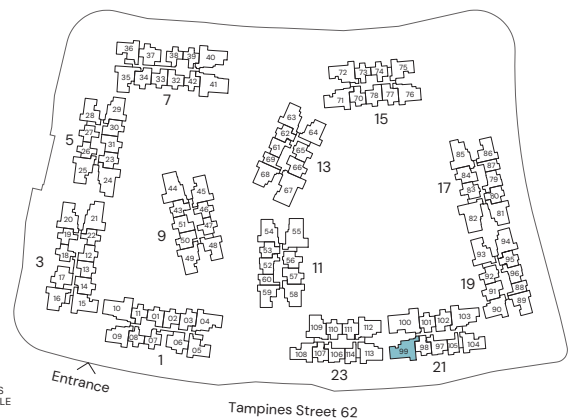
TYPE CPS4

110 sqm / 1184 sqft

BLK 21 #02-99 to #12-99



Area includes Private Enclosed Space (PES) or Balcony, where applicable. All AC ledges and RC ledges (non-load bearing) are excluded from strata area. The plans are subjected to change as may be required by relevant authorities. All areas and measurements stated herein as approximate and subject to final survey.



KEY PLAN IS NOT TO SCALE

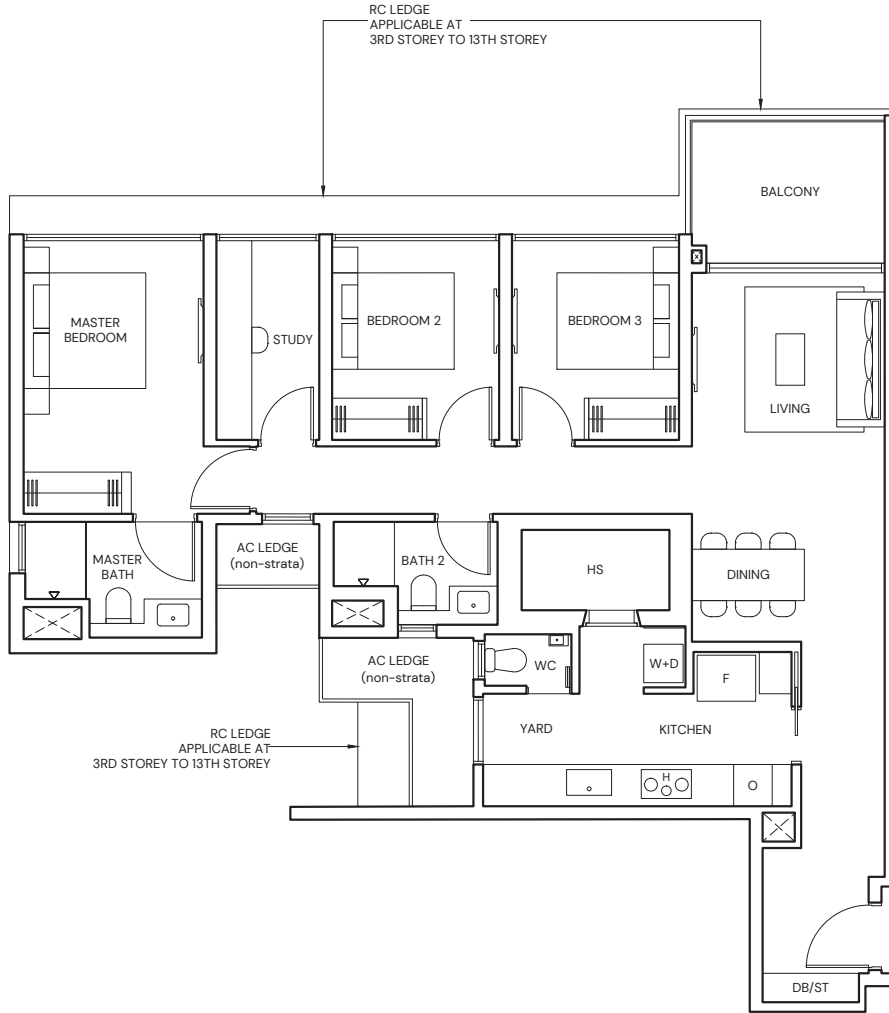
3-BEDROOM PREMIUM + STUDY

TYPE CPS5

110 sqm / 1184 sqft

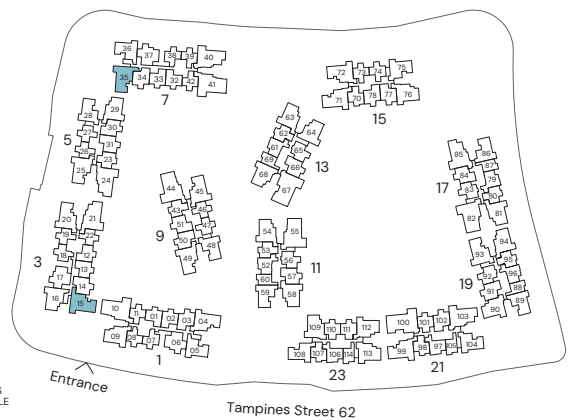
BLK 3 #02-15 to #13-15

BLK 7 #02-35 to #12-35



Area includes Private Enclosed Space (PES) or Balcony, where applicable. All AC ledges and RC ledges (non-load bearing) are excluded from strata area. The plans are subjected to change as may be required by relevant authorities. All areas and measurements stated herein as approximate and subject to final survey.

KEY PLAN IS NOT TO SCALE



4-BEDROOM

TYPE D1

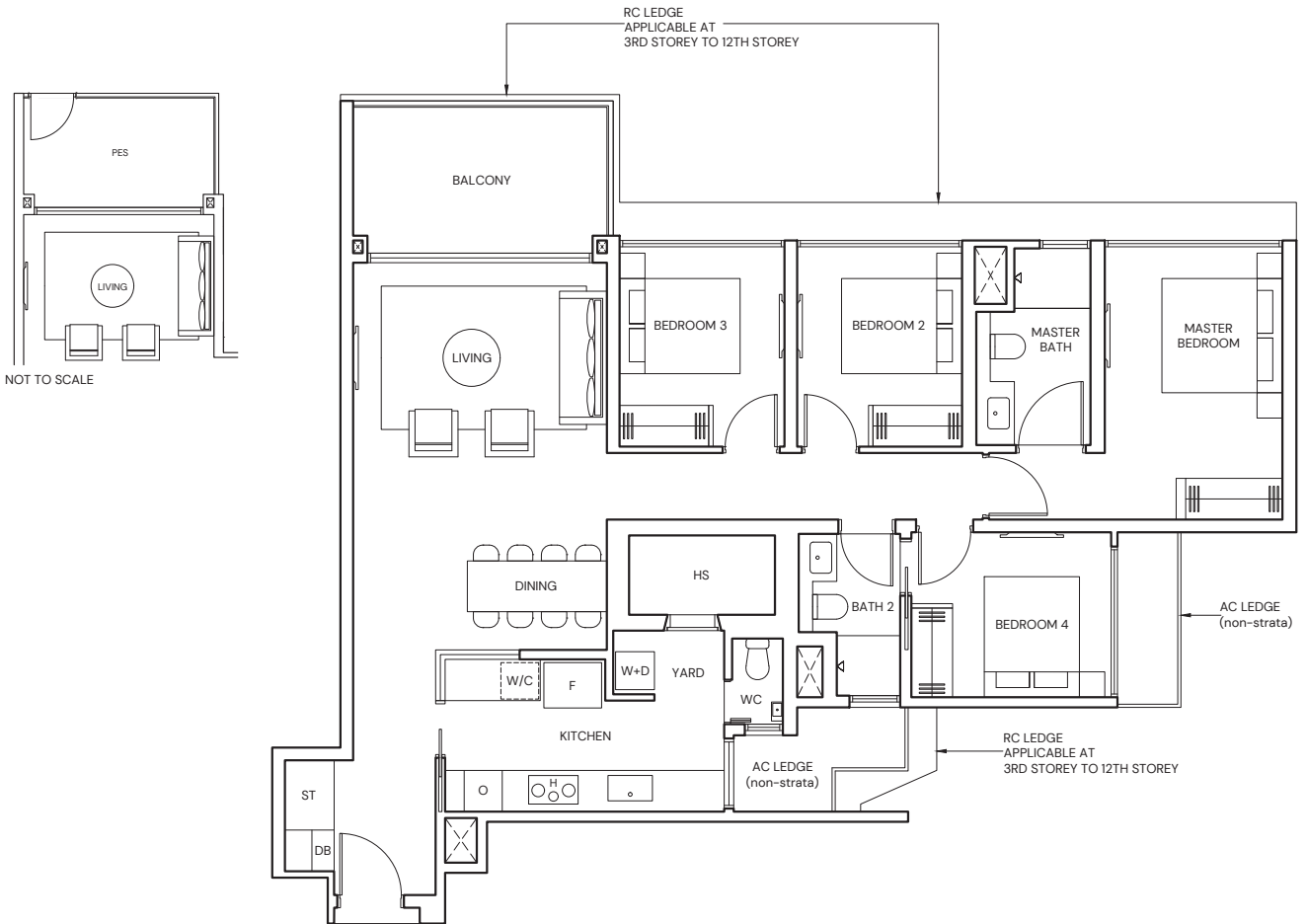
124 sqm / 1335 sqft

BLK 21 #03-103 to #12-103

TYPE D1(p)

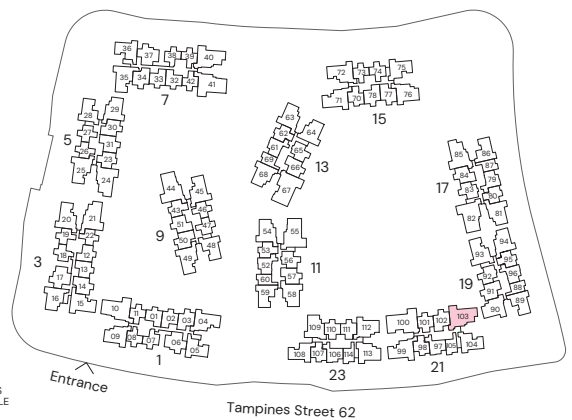
124 sqm / 1335 sqft

BLK 21 #02-103



Area includes Private Enclosed Space (PES) or Balcony, where applicable. All AC ledges and RC ledges (non-load bearing) are excluded from strata area. The plans are subjected to change as may be required by relevant authorities. All areas and measurements stated herein as approximate and subject to final survey.

KEY PLAN IS NOT TO SCALE



4-BEDROOM

TYPE D2

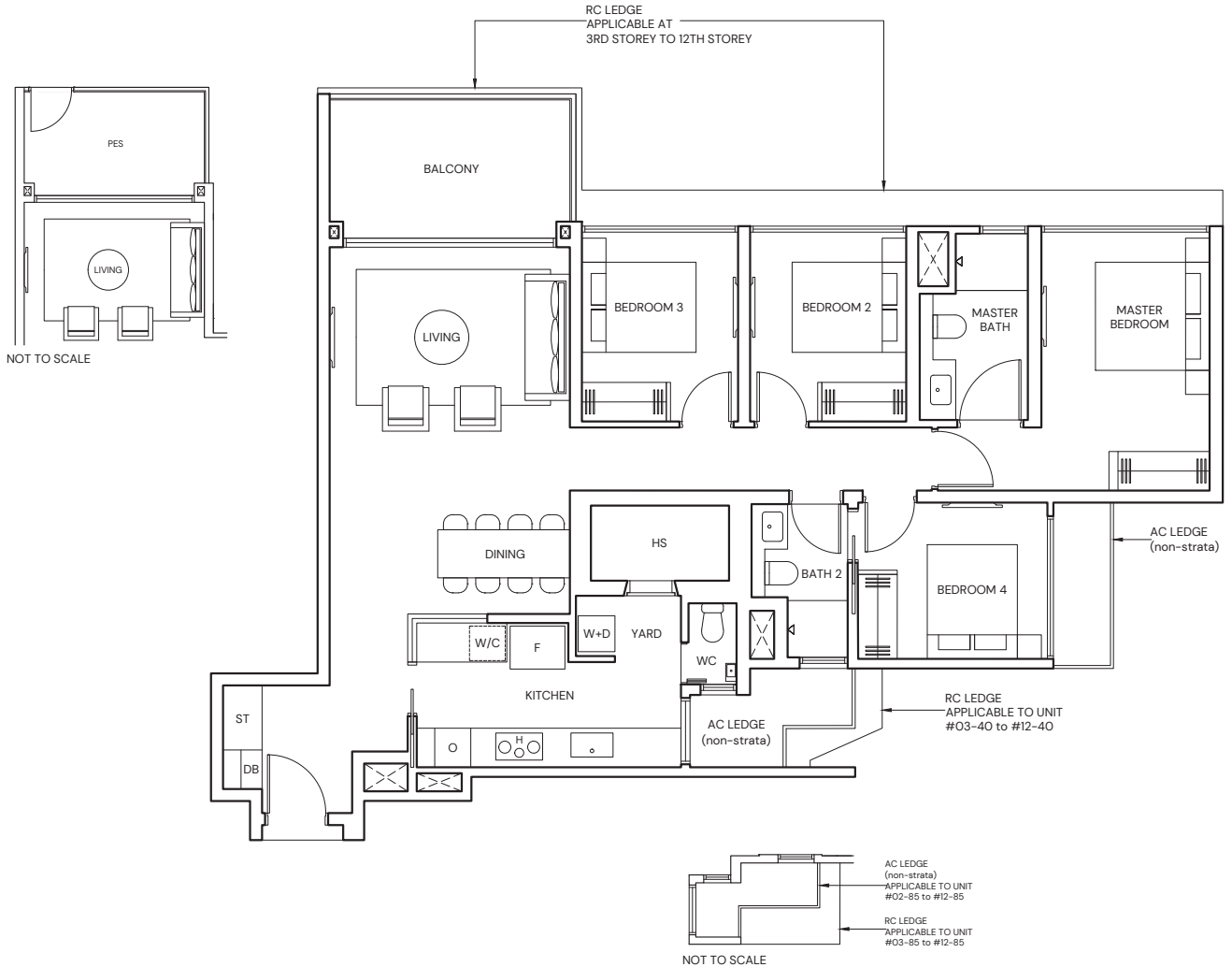
124 sqm / 1335 sqft

BLK 7 #02-40 to #12-40
BLK 17 #03-85 to #12-85

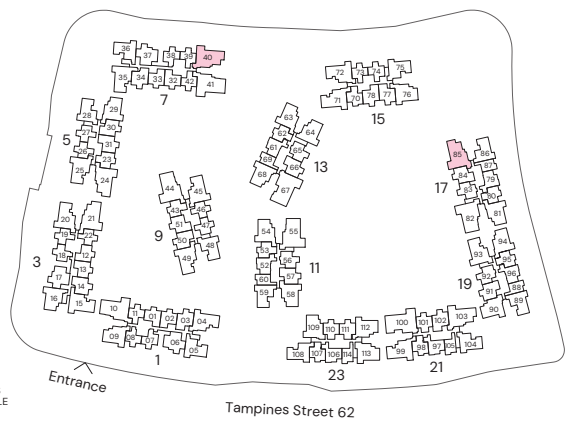
TYPE D2(p)

124 sqm / 1335 sqft

BLK 17 #02-85



Area includes Private Enclosed Space (PES) or Balcony, where applicable. All AC ledges and RC ledges (non-load bearing) are excluded from strata area. The plans are subjected to change as may be required by relevant authorities. All areas and measurements stated herein as approximate and subject to final survey.



4-BEDROOM

TYPE D3

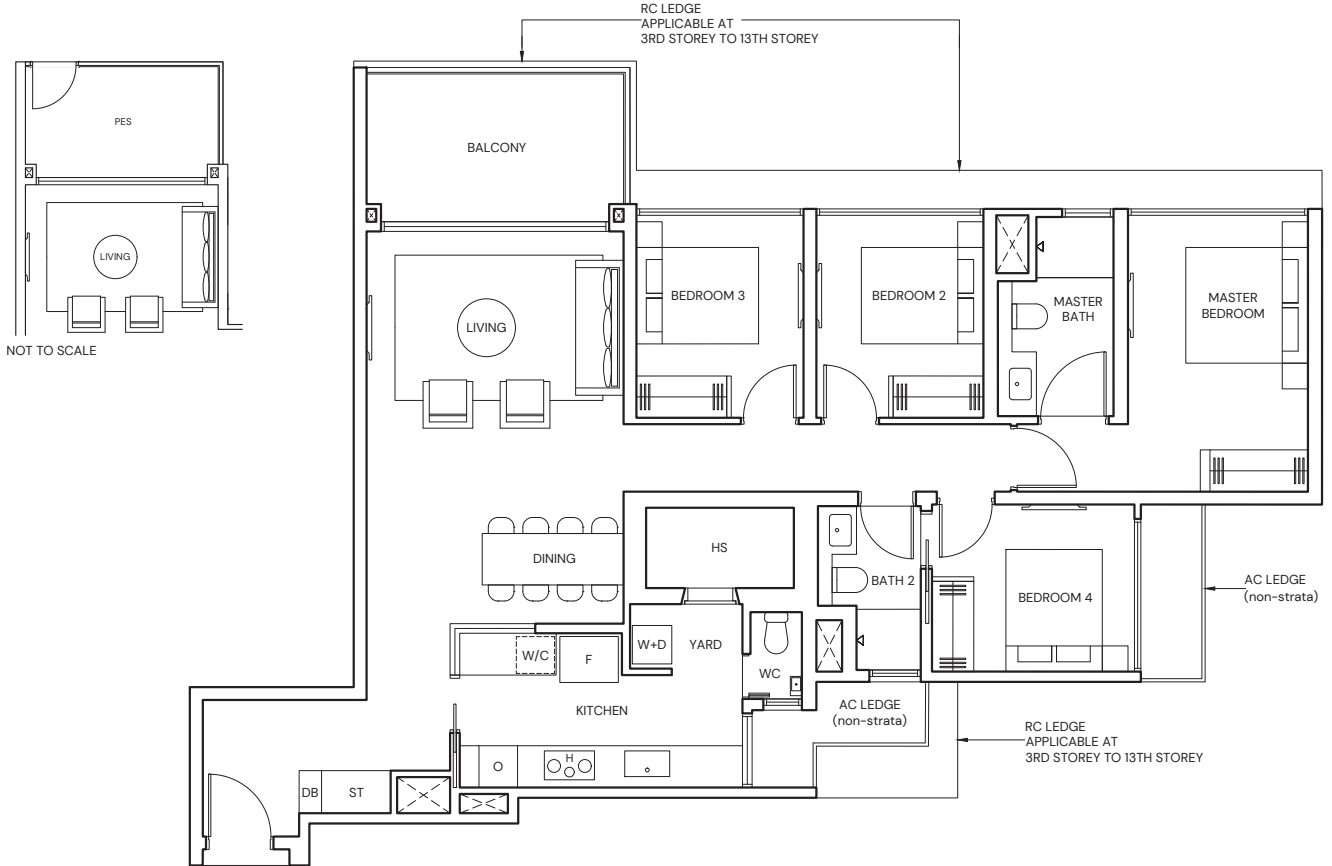
125 sqm / 1345 sqft

BLK 5 #03-24 to #13-24

TYPE D3(p)

125 sqm / 1345 sqft

BLK 5 #02-24

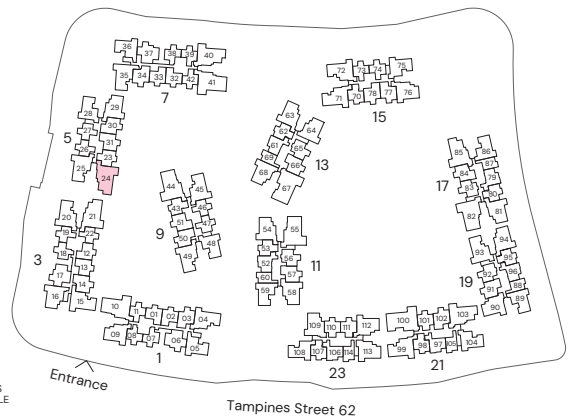


NOT TO SCALE



Area includes Private Enclosed Space (PES) or Balcony, where applicable. All AC ledges and RC ledges (non-load bearing) are excluded from strata area. The plans are subjected to change as may be required by relevant authorities. All areas and measurements stated herein as approximate and subject to final survey.

KEY PLAN IS NOT TO SCALE



4-BEDROOM

TYPE D4

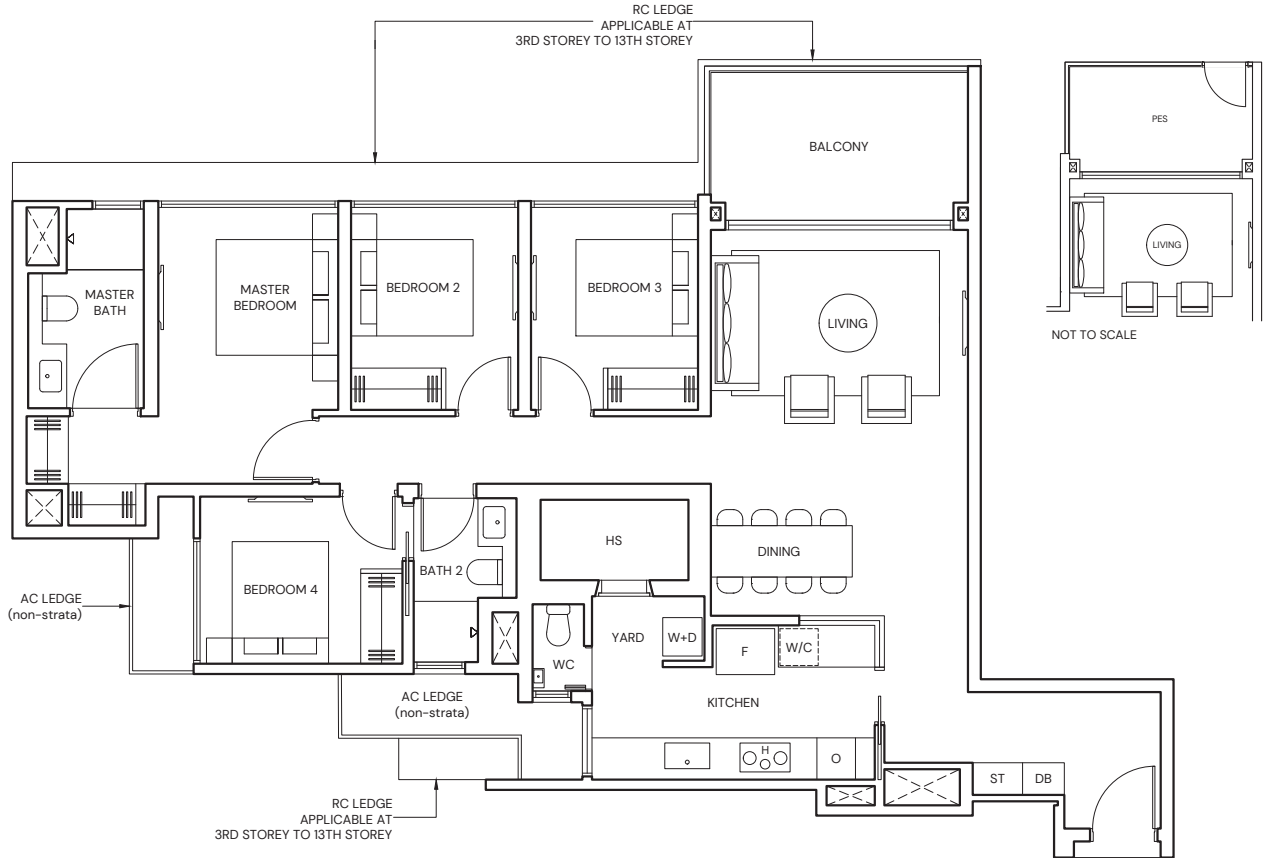
126 sqm / 1356 sqft

BLK 3 #03-21 to #13-21

TYPE D4(p)

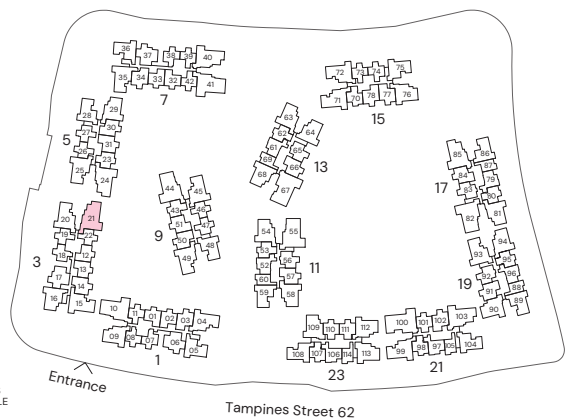
126 sqm / 1356 sqft

BLK 3 #02-21



Area includes Private Enclosed Space (PES) or Balcony, where applicable. All AC ledges and RC ledges (non-load bearing) are excluded from strata area. The plans are subjected to change as may be required by relevant authorities. All areas and measurements stated herein as approximate and subject to final survey.

KEY PLAN IS NOT TO SCALE



4-BEDROOM PREMIUM

TYPE DP1

138 sqm / 1485 sqft

BLK 11 #03-55 to #08-55

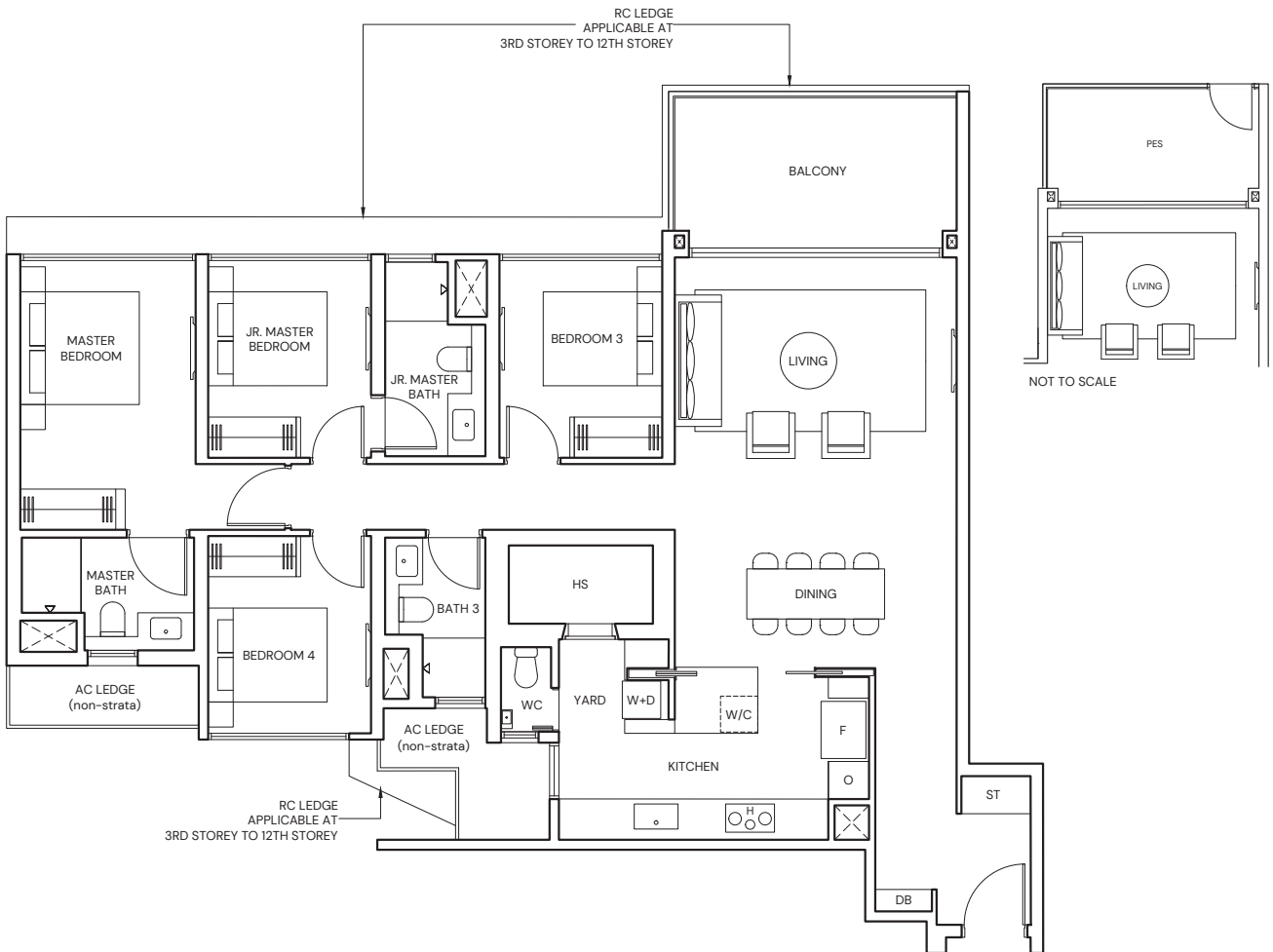
BLK 17 #03-82 to #12-82

TYPE DP1(p)

138 sqm / 1485 sqft

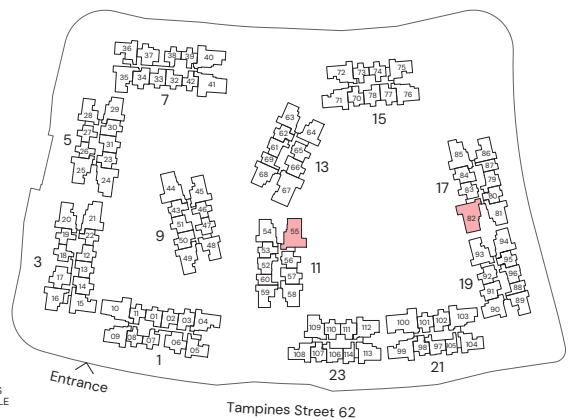
BLK 11 #02-55

BLK 17 #02-82



Area includes Private Enclosed Space (PES) or Balcony, where applicable. All AC ledges and RC ledges (non-load bearing) are excluded from strata area. The plans are subjected to change as may be required by relevant authorities. All areas and measurements stated herein as approximate and subject to final survey.

KEY PLAN IS NOT TO SCALE



4-BEDROOM PREMIUM

TYPE DP2

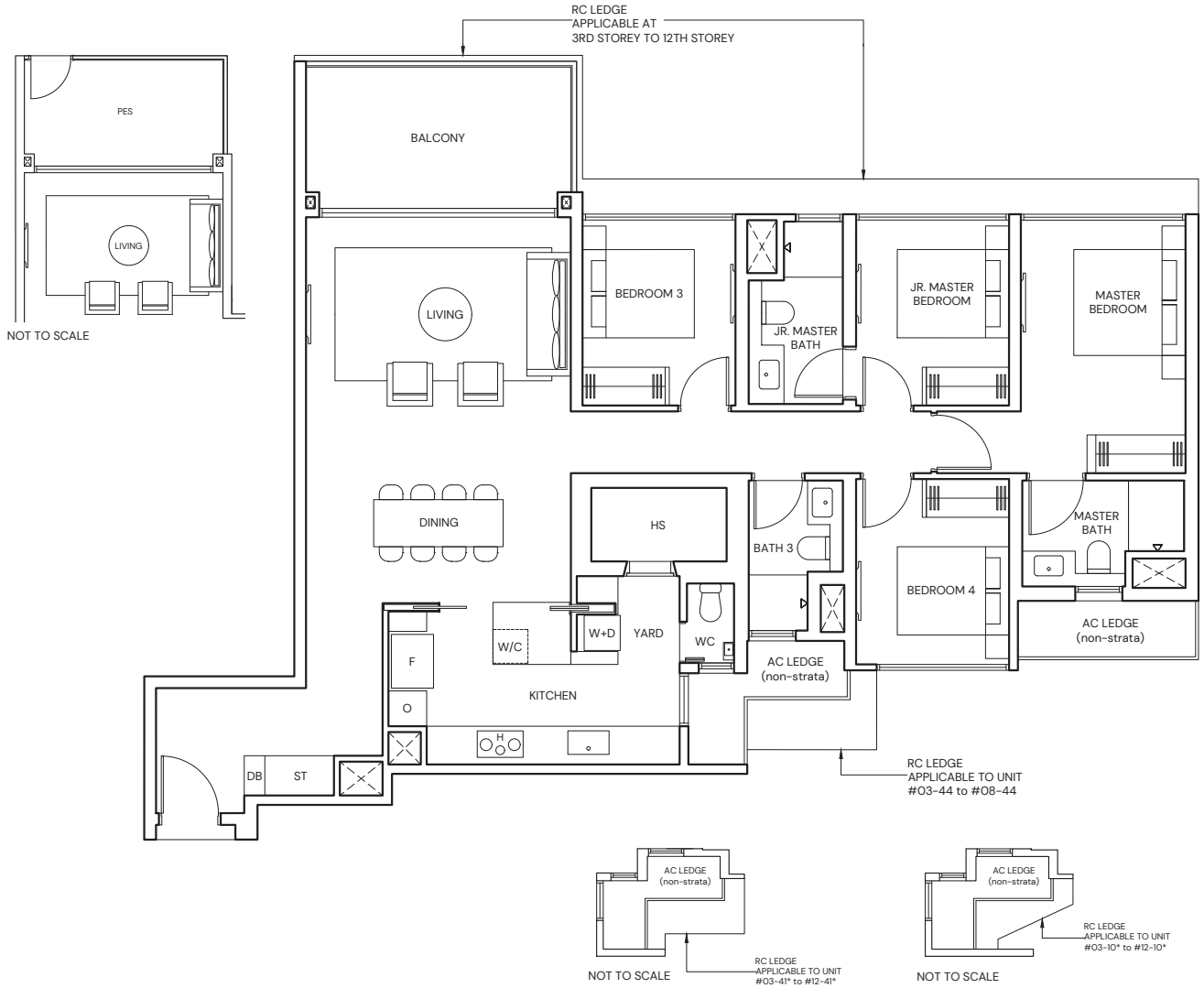
139 sqm / 1496 sqft

BLK 1 #03-10* to #12-10*
 BLK 7 #03-41* to #12-41*
 BLK 9 #03-44 to #08-44

TYPE DP2(p)

139 sqm / 1496 sqft

BLK 1 #02-10*
 BLK 7 #02-41*
 BLK 9 #02-44

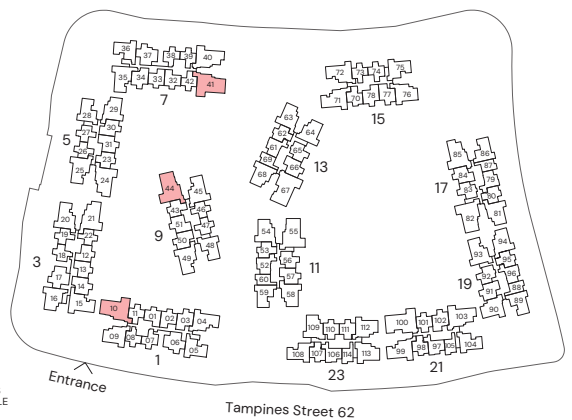


* Mirrored Unit



Area includes Private Enclosed Space (PES) or Balcony, where applicable. All AC ledges and RC ledges (non-load bearing) are excluded from strata area. The plans are subjected to change as may be required by relevant authorities. All areas and measurements stated herein as approximate and subject to final survey.

KEY PLAN IS NOT TO SCALE



5-BEDROOM PREMIUM

TYPE E1

156 sqm / 1679 sqft

BLK 13 #03-67 to #12-67

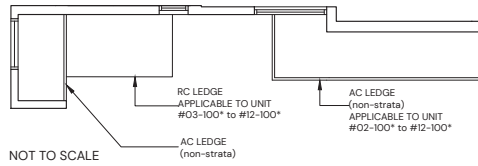
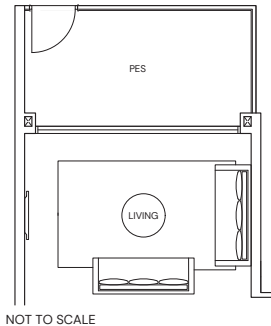
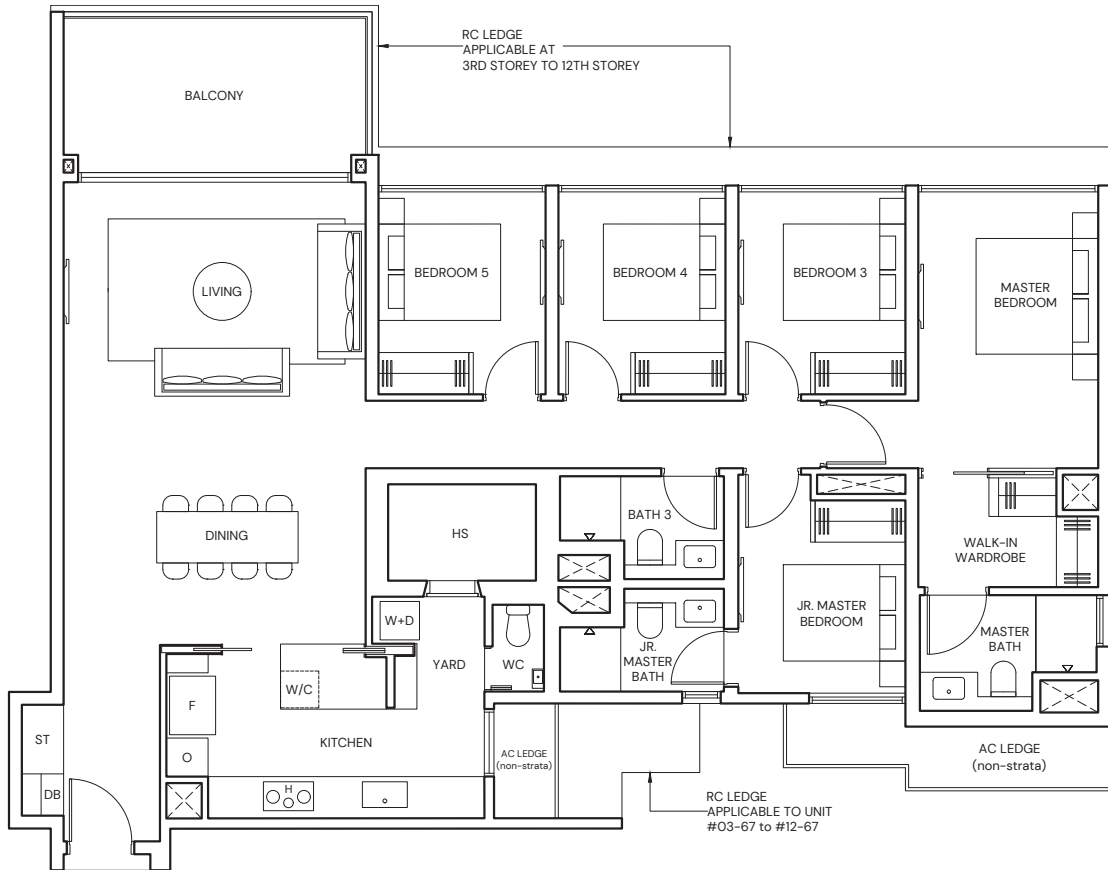
BLK 21 #03-100* to #12-100*

TYPE E1(p)

156 sqm / 1679 sqft

BLK 13 #02-67

BLK 21 #02-100*



* Mirrored Unit



Area includes Private Enclosed Space (PES) or Balcony, where applicable. All AC ledges and RC ledges (non-load bearing) are excluded from strata area. The plans are subjected to change as may be required by relevant authorities. All areas and measurements stated herein as approximate and subject to final survey.

